

# OSGEPL1 Rabbit pAb

Catalog No.: A8022

## Basic Information

### Observed MW

45kDa

### Calculated MW

45kDa

### Category

Primary antibody

### Applications

ELISA, WB, IHC-P

### Cross-Reactivity

Human, Mouse, Rat

## Background

Predicted to enable N(6)-L-threonylcarbamoyladenine synthase activity and metal ion binding activity. Predicted to be involved in tRNA threonylcarbamoyladenosine modification. Located in mitochondrion.

## Recommended Dilutions

WB	1:500 - 1:2000
IHC-P	1:50 - 1:100

## Immunogen Information

### Gene ID

64172

### Swiss Prot

Q9H4B0

### Immunogen

Recombinant fusion protein containing a sequence corresponding to amino acids 1-270 of human OSGEPL1 (NP\_071748.2).

### Synonyms

Qri7; OSGEPL; OSGEPL1

## Contact

 | 400-999-6126

 | [cn.market@abclonal.com.cn](mailto:cn.market@abclonal.com.cn)

 | [www.abclonal.com.cn](http://www.abclonal.com.cn)

## Product Information

### Source

Rabbit

### Isotype

IgG

### Purification

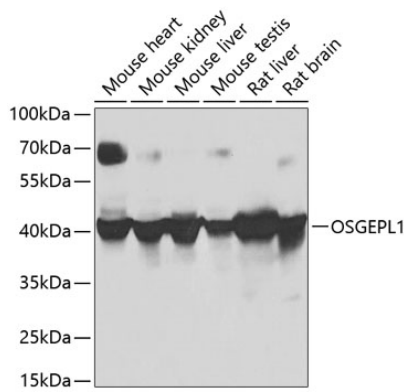
Affinity purification

### Storage

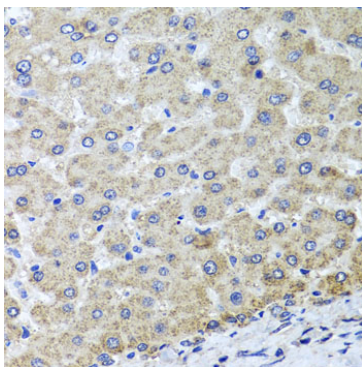
Store at -20°C. Avoid freeze / thaw cycles.

Buffer: PBS with 0.02% sodium azide, 50% glycerol, pH7.3.

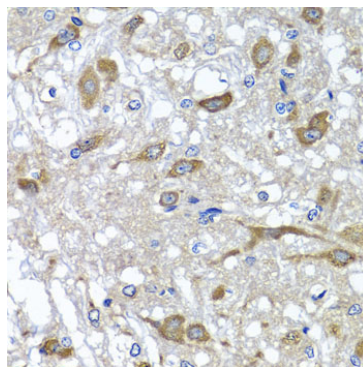
## Validation Data



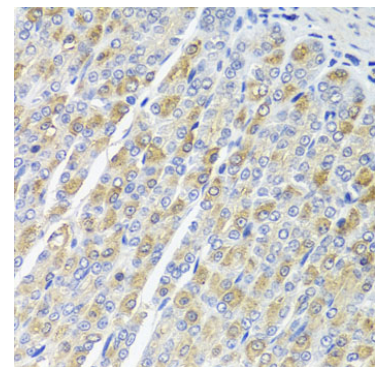
Western blot analysis of various lysates using OSGEPL1 Rabbit pAb (A8022) at 1:1000 dilution. Secondary antibody: HRP Goat Anti-Rabbit IgG (H+L) (AS014) at 1:10000 dilution. Lysates/proteins: 25µg per lane. Blocking buffer: 3% nonfat dry milk in TBST. Detection: ECL Basic Kit (RM00020). Exposure time: 30s.



Immunohistochemistry analysis of paraffin-embedded Human liver damage using OSGEPL1 Rabbit pAb (A8022) at dilution of 1:100 (40x lens). Perform microwave antigen retrieval with 10 mM PBS buffer pH 7.2 before commencing with IHC staining protocol.



Immunohistochemistry analysis of paraffin-embedded Rat brain using OSGEPL1 Rabbit pAb (A8022) at dilution of 1:100 (40x lens). Perform microwave antigen retrieval with 10 mM PBS buffer pH 7.2 before commencing with IHC staining protocol.



Immunohistochemistry analysis of paraffin-embedded Mouse stomach using OSGEPL1 Rabbit pAb (A8022) at dilution of 1:100 (40x lens). Perform microwave antigen retrieval with 10 mM PBS buffer pH 7.2 before commencing with IHC staining protocol.