

RAB35 Rabbit pAb

Catalog No.: A8030 **2 Publications**

Basic Information

Observed MW

23kDa

Calculated MW

23kDa

Category

Primary antibody

Applications

ELISA, WB, IHC-P, IF/ICC

Cross-Reactivity

Human, Mouse, Rat

Background

Enables GTPase activity; guanyl ribonucleotide binding activity; and phosphatidylinositol-4,5-bisphosphate binding activity. Involved in several processes, including endosomal transport; plasma membrane to endosome transport; and protein localization to endosome. Located in several cellular components, including clathrin-coated endocytic vesicle; clathrin-coated pit; and intercellular bridge.

Recommended Dilutions

WB	1:500 - 1:1000
IHC-P	1:50 - 1:200
IF/ICC	1:50 - 1:200

Immunogen Information

Gene ID

11021

Swiss Prot

Q15286

Immunogen

A synthetic peptide corresponding to a sequence within amino acids 100-201 of human RAB35 (NP_006852.1).

Synonyms

RAY; H-ray; RAB1C; RAB35

Contact

☎ | 400-999-6126

✉ | cn.market@abclonal.com.cn

🌐 | www.abclonal.com.cn

Product Information

Source

Rabbit

Isotype

IgG

Purification

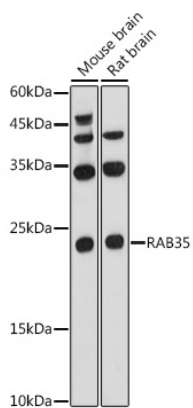
Affinity purification

Storage

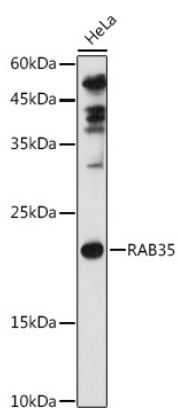
Store at -20°C. Avoid freeze / thaw cycles.

Buffer: PBS with 0.05% proclin300, 50% glycerol, pH7.3.

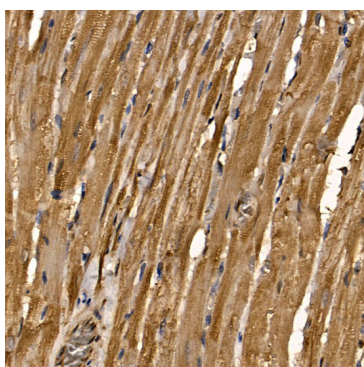
Validation Data



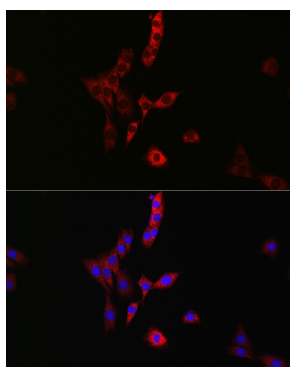
Western blot analysis of various lysates using RAB35 Rabbit pAb (A8030) at 1:1000 dilution.
Secondary antibody: HRP Goat Anti-Rabbit IgG (H+L) (AS014) at 1:10000 dilution.
Lysates/proteins: 25µg per lane.
Blocking buffer: 3% nonfat dry milk in TBST.
Detection: ECL Basic Kit (RM00020).
Exposure time: 30s.



Western blot analysis of lysates from HeLa cells, using RAB35 Rabbit pAb (A8030) at 1:1000 dilution.
Secondary antibody: HRP Goat Anti-Rabbit IgG (H+L) (AS014) at 1:10000 dilution.
Lysates/proteins: 25µg per lane.
Blocking buffer: 3% nonfat dry milk in TBST.
Detection: ECL Basic Kit (RM00020).
Exposure time: 90s.



Immunohistochemistry analysis of paraffin-embedded Rat heart using RAB35 Rabbit pAb (A8030) at dilution of 1:100 (40x lens). Perform microwave antigen retrieval with 10 mM PBS buffer pH 7.2 before commencing with IHC staining protocol.



Immunofluorescence analysis of PC-12 cells using RAB35 Rabbit pAb (A8030) at dilution of 1:100 (40x lens). Secondary antibody: Cy3 Goat Anti-Rabbit IgG (H+L) (AS007) at 1:500 dilution. Blue: DAPI for nuclear staining.