

# ATG12 Rabbit pAb

Catalog No.: A8033 **1 Publications**

## Basic Information

### Observed MW

55kDa

### Calculated MW

15kDa

### Category

Primary antibody

### Applications

WB,IF/ICC

### Cross-Reactivity

Human

## Background

Autophagy is a process of bulk protein degradation in which cytoplasmic components, including organelles, are enclosed in double-membrane structures called autophagosomes and delivered to lysosomes or vacuoles for degradation. ATG12 is the human homolog of a yeast protein involved in autophagy (Mizushima et al., 1998 [PubMed 9852036]).

## Recommended Dilutions

<b>WB</b>	1:500 - 1:2000
<b>IF/ICC</b>	1:20 - 1:50

## Immunogen Information

### Gene ID

9140

### Swiss Prot

O94817

### Immunogen

A synthetic peptide of human ATG12

### Synonyms

APG12; FBR93; APG12L; HAPG12; ATG12

## Contact

 | 400-999-6126

 | [cn.market@abclonal.com.cn](mailto:cn.market@abclonal.com.cn)

 | [www.abclonal.com.cn](http://www.abclonal.com.cn)

## Product Information

### Source

Rabbit

### Isotype

IgG

### Purification

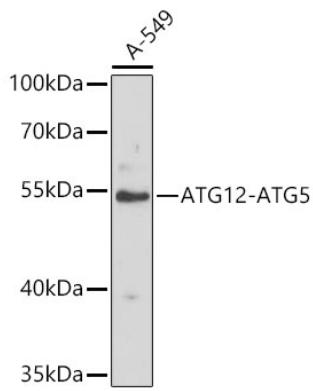
Affinity purification

### Storage

Store at 4°C (regular) or -20°C (long term). Avoid freeze / thaw cycles.  
Buffer: PBS with 0.02% sodium azide, pH7.3.

## Validation Data

---



Western blot analysis of lysates from A-549 cells, using ATG12 Rabbit pAb (A8033).  
Secondary antibody: HRP-conjugated Goat anti-Rabbit IgG (H+L) (AS014) at 1:10000 dilution.  
Lysates/proteins: 25µg per lane.  
Blocking buffer: 3% nonfat dry milk in TBST.