

ANAPC2 Rabbit pAb

Catalog No.: A8066 **3 Publications**

Basic Information

Observed MW

102kDa

Calculated MW

94kDa

Category

Primary antibody

Applications

ELISA, WB, IHC-P

Cross-Reactivity

Mouse, Rat

Background

A large protein complex, termed the anaphase-promoting complex (APC), or the cyclosome, promotes metaphase-anaphase transition by ubiquitinating its specific substrates such as mitotic cyclins and anaphase inhibitor, which are subsequently degraded by the 26S proteasome. Biochemical studies have shown that the vertebrate APC contains eight subunits. The composition of the APC is highly conserved in organisms from yeast to humans. The product of this gene is a component of the complex and shares sequence similarity with a recently identified family of proteins called cullins, which may also be involved in ubiquitin-mediated degradation.

Recommended Dilutions

WB	1:500 - 1:2000
IHC-P	1:100 - 1:500

Immunogen Information

Gene ID

29882

Swiss Prot

Q9UJX6

Immunogen

A synthetic peptide corresponding to a sequence within amino acids 400-500 of human ANAPC2 (NP_037498.1).

Synonyms

APC2; ANAPC2

Contact

☎ | 400-999-6126

✉ | cn.market@abclonal.com.cn

🌐 | www.abclonal.com.cn

Product Information

Source

Rabbit

Isotype

IgG

Purification

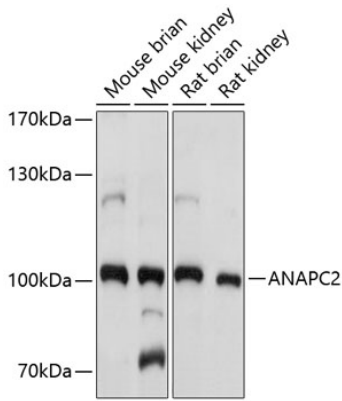
Affinity purification

Storage

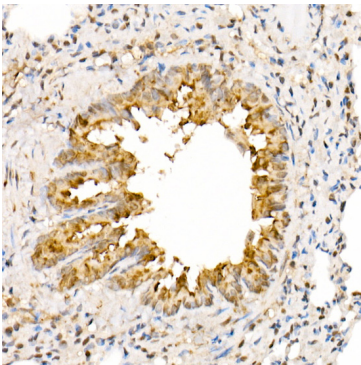
Store at -20°C. Avoid freeze / thaw cycles.

Buffer: PBS with 0.01% thimerosal, 50% glycerol, pH7.3.

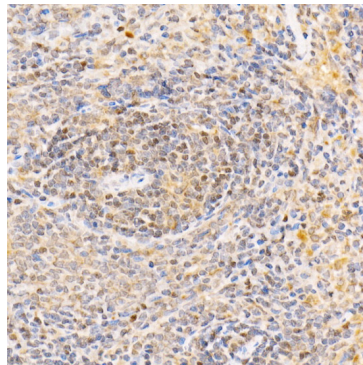
Validation Data



Western blot analysis of various lysates using ANAPC2 Rabbit pAb (A8066) at 1:1000 dilution. Secondary antibody: HRP Goat Anti-Rabbit IgG (H+L) (AS014) at 1:10000 dilution. Lysates/proteins: 25µg per lane. Blocking buffer: 3% nonfat dry milk in TBST. Detection: ECL Basic Kit (RM00020). Exposure time: 5s.



Immunohistochemistry analysis of paraffin-embedded Rat lung using ANAPC2 Rabbit pAb (A8066) at dilution of 1:300 (40x lens). Perform high pressure antigen retrieval with 10 mM citrate buffer pH 6.0 before commencing with IHC staining protocol.



Immunohistochemistry analysis of paraffin-embedded Rat spleen using ANAPC2 Rabbit pAb (A8066) at dilution of 1:300 (40x lens). Perform high pressure antigen retrieval with 10 mM citrate buffer pH 6.0 before commencing with IHC staining protocol.