

NKX3-2 Rabbit pAb

Catalog No.: A8093

Basic Information

Observed MW

40kDa/46kDa

Calculated MW

35kDa

Category

Primary antibody

Applications

WB, ELISA

Cross-Reactivity

Human, Mouse, Rat

Background

Enables sequence-specific double-stranded DNA binding activity. Predicted to be involved in cell differentiation; negative regulation of chondrocyte differentiation; and regulation of transcription by RNA polymerase II. Predicted to act upstream of or within several processes, including animal organ development; embryonic skeletal system development; and intestinal epithelial cell development. Predicted to be part of chromatin. Predicted to be active in nucleus.

Recommended Dilutions

WB 1:100 - 1:500

ELISA Recommended starting concentration is 1 µg/mL. Please optimize the concentration based on your specific assay requirements.

Immunogen Information

Gene ID

579

Swiss Prot

P78367

Immunogen

Recombinant fusion protein containing a sequence corresponding to amino acids 1-180 of human NKX3-2 (NP_001180.1).

Synonyms

SMMD; BAPX1; NKX3B; NKX3.2; NKX3-2

Contact

☎ | 400-999-6126

✉ | cn.market@abclonal.com.cn

🌐 | www.abclonal.com.cn

Product Information

Source

Rabbit

Isotype

IgG

Purification

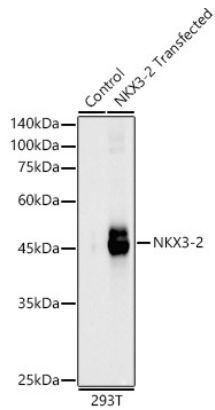
Affinity purification

Storage

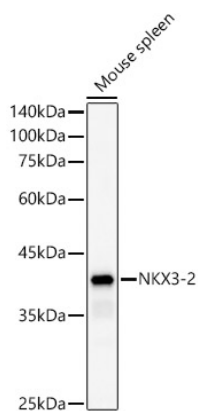
Store at -20°C. Avoid freeze / thaw cycles.

Buffer: PBS with 0.01% thimerosal, 50% glycerol, pH7.3.

Validation Data



Western blot analysis of lysates from wild type (WT) and 293T cells transfected with NKX3-2, using NKX3-2 Rabbit pAb (A8093) at 1:500 dilution.
Secondary antibody: HRP-conjugated Goat anti-Rabbit IgG (H+L) (AS014) at 1:10000 dilution.
Lysates/proteins: 25 µg per lane.
Blocking buffer: 3% nonfat dry milk in TBST.
Detection: ECL Basic Kit (RM00020).
Exposure time: 30s.



Western blot analysis of lysates from Mouse spleen, using NKX3-2 Rabbit pAb (A8093) at 1:500 dilution.
Secondary antibody: HRP-conjugated Goat anti-Rabbit IgG (H+L) (AS014) at 1:10000 dilution.
Lysates/proteins: 25µg per lane.
Blocking buffer: 3% nonfat dry milk in TBST.
Detection: ECL Basic Kit (RM00020).
Exposure time: 180s.