

# K-Cadherin (CDH6) Rabbit pAb

Catalog No.: A8109

## Basic Information

### Observed MW

100kDa

### Calculated MW

88kDa

### Category

Primary antibody

### Applications

ELISA, WB

### Cross-Reactivity

Human, Mouse, Rat

## Background

This gene encodes a member of the cadherin superfamily. Cadherins are membrane glycoproteins that mediate homophilic cell-cell adhesion and play critical roles in cell differentiation and morphogenesis. The encoded protein is a type II cadherin and may play a role in kidney development as well as endometrium and placenta formation. Decreased expression of this gene may be associated with tumor growth and metastasis.

## Recommended Dilutions

WB 1:500 - 1:2000

## Immunogen Information

### Gene ID

1004

### Swiss Prot

P55285

### Immunogen

Recombinant fusion protein containing a sequence corresponding to amino acids 1-250 of human K-Cadherin (K-Cadherin (CDH6)) (NP\_004923.1).

### Synonyms

CAD6; KCAD; K-Cadherin (CDH6)

## Contact

 | 400-999-6126

 | [cn.market@abclonal.com.cn](mailto:cn.market@abclonal.com.cn)

 | [www.abclonal.com.cn](http://www.abclonal.com.cn)

## Product Information

### Source

Rabbit

### Isotype

IgG

### Purification

Affinity purification

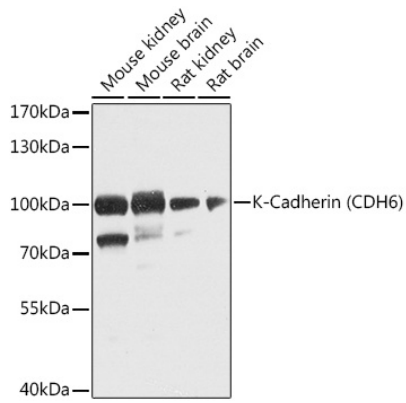
### Storage

Store at -20°C. Avoid freeze / thaw cycles.

Buffer: PBS with 0.02% sodium azide, 50% glycerol, pH 7.3.

## Validation Data

---



Western blot analysis of extracts of various cell lines, using K-Cadherin (K-Cadherin (CDH6)) antibody (A8109) at 1:1000 dilution.

Secondary antibody: HRP Goat Anti-Rabbit IgG (H+L) (AS014) at 1:10000 dilution.

Lysates/proteins: 25µg per lane.

Blocking buffer: 3% nonfat dry milk in TBST.

Detection: ECL Basic Kit (RM00020).

Exposure time: 90s.