

MEP1A Rabbit pAb

Catalog No.: A8133

Basic Information

Observed MW

84kDa

Calculated MW

84kDa

Category

Primary antibody

Applications

ELISA, WB

Cross-Reactivity

Human, Mouse, Rat

Background

Predicted to enable metalloendopeptidase activity. Predicted to be involved in proteolysis. Located in extracellular exosome. Part of meprin A complex.

Recommended Dilutions

WB 1:500 - 1:2000

Immunogen Information

Gene ID

4224

Swiss Prot

Q16819

Immunogen

Recombinant fusion protein containing a sequence corresponding to amino acids 440-700 of human MEP1A (NP_005579.2).

Synonyms

PPHA; MEP1A

Contact

☎ | 400-999-6126

✉ | cn.market@abclonal.com.cn

🌐 | www.abclonal.com.cn

Product Information

Source

Rabbit

Isotype

IgG

Purification

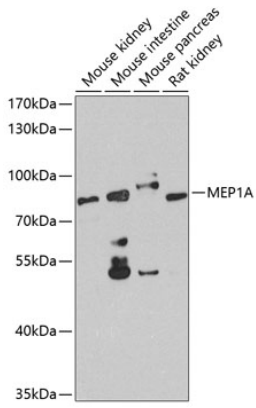
Affinity purification

Storage

Store at -20°C. Avoid freeze / thaw cycles.

Buffer: PBS with 0.02% sodium azide, 50% glycerol, pH 7.3.

Validation Data



Western blot analysis of extracts of various cell lines, using MEP1A antibody (A8133) at 1:1000 dilution.
Secondary antibody: HRP Goat Anti-Rabbit IgG (H+L) (AS014) at 1:10000 dilution.
Lysates/proteins: 25 μ g per lane.
Blocking buffer: 3% nonfat dry milk in TBST.
Detection: ECL Basic Kit (RM00020).
Exposure time: 90s.