

MT-ND5 Rabbit pAb

Catalog No.: A8135

Basic Information

Observed MW

67kDa

Calculated MW

67kDa

Category

Primary antibody

Applications

ELISA, WB, IHC-P, IF/ICC

Cross-Reactivity

Human, Mouse, Rat

Background

Contributes to NADH dehydrogenase (ubiquinone) activity. Predicted to be involved in electron transport coupled proton transport; mitochondrial electron transport, NADH to ubiquinone; and mitochondrial respiratory chain complex I assembly. Located in mitochondrion. Is expressed in central nervous system; heart; liver; metanephros; and retina. Human ortholog(s) of this gene implicated in Leber hereditary optic neuropathy; Leigh disease; and MELAS syndrome. Orthologous to human MT-ND5 (mitochondrially encoded NADH:ubiquinone oxidoreductase core subunit 5).

Recommended Dilutions

WB	1:500 - 1:2000
IHC-P	1:50 - 1:200
IF/ICC	1:50 - 1:200

Immunogen Information

Gene ID

17721

Swiss Prot

P03915

Immunogen

A synthetic peptide corresponding to a sequence within amino acids 500-607 of mouse MT-ND5 (NP_904338.1).

Synonyms

ND5; MT-ND5

Contact

☎ | 400-999-6126

✉ | cn.market@abclonal.com.cn

🌐 | www.abclonal.com.cn

Product Information

Source

Rabbit

Isotype

IgG

Purification

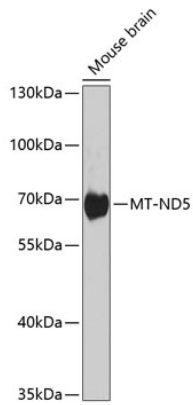
Affinity purification

Storage

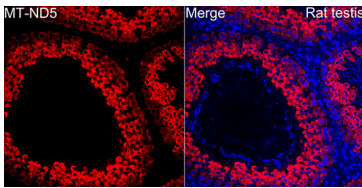
Store at -20°C. Avoid freeze / thaw cycles.

Buffer: PBS with 0.02% sodium azide, 50% glycerol, pH7.3.

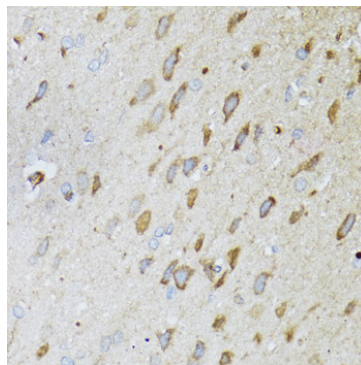
Validation Data



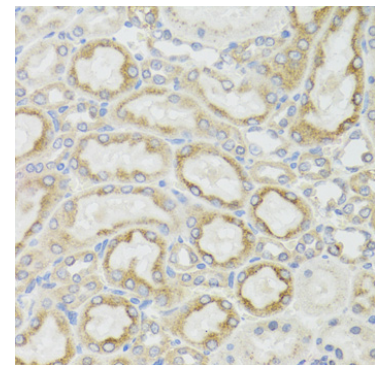
Western blot analysis of various lysates using MT-ND5 Rabbit pAb (A8135) at 1:1000 dilution. Secondary antibody: HRP Goat Anti-Rabbit IgG (H+L) (AS014) at 1:10000 dilution. Lysates/proteins: 25µg per lane. Blocking buffer: 3% nonfat dry milk in TBST. Detection: ECL Basic Kit (RM00020). Exposure time: 5s.



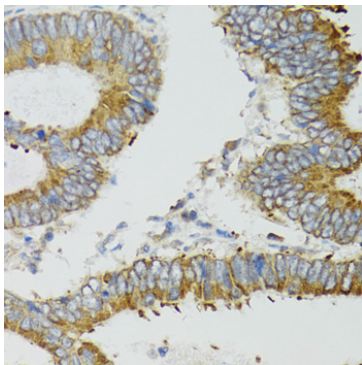
Immunofluorescence analysis of paraffin-embedded Rat testis using MT-ND5 Rabbit pAb(A8135) at a dilution of 1:100 (40x lens). Secondary antibody: Cy3 Goat Anti-Rabbit IgG (H+L)(AS007) at 1:500 dilution. Blue: DAPI for nuclear staining.



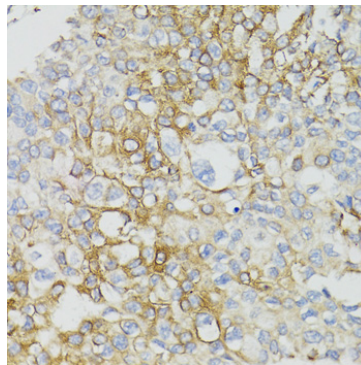
Immunohistochemistry analysis of paraffin-embedded Rat brain using MT-ND5 Rabbit pAb (A8135) at dilution of 1:100 (40x lens). Perform microwave antigen retrieval with 10 mM PBS buffer pH 7.2 before commencing with IHC staining protocol.



Immunohistochemistry analysis of paraffin-embedded Rat kidney using MT-ND5 Rabbit pAb (A8135) at dilution of 1:100 (40x lens). Perform microwave antigen retrieval with 10 mM PBS buffer pH 7.2 before commencing with IHC staining protocol.



Immunohistochemistry analysis of paraffin-embedded Human colon carcinoma using MT-ND5 Rabbit pAb (A8135) at dilution of 1:100 (40x lens). Perform microwave antigen retrieval with 10 mM PBS buffer pH 7.2 before commencing with IHC staining protocol.



Immunohistochemistry analysis of paraffin-embedded Human prostate cancer using MT-ND5 Rabbit pAb (A8135) at dilution of 1:100 (40x lens). Perform microwave antigen retrieval with 10 mM PBS buffer pH 7.2 before commencing with IHC staining protocol.