

# PLCB2 Rabbit pAb

Catalog No.: A8141 **1 Publications**

## Basic Information

### Observed MW

140kDa

### Calculated MW

134kDa

### Category

Primary antibody

### Applications

ELISA,WB

### Cross-Reactivity

Human, Mouse, Rat

## Background

The protein encoded by this gene is a phosphodiesterase that catalyzes the hydrolysis of phosphatidylinositol 4,5-bisphosphate to the second messengers inositol 1,4,5-trisphosphate (IP3) and diacylglycerol. The encoded protein is activated by G proteins and has been shown to be involved in the type 2 taste receptor signal transduction pathway. In addition, nuclear factor kappa B can regulate the transcription of this gene, whose protein product is also an important regulator of platelet responses.

## Recommended Dilutions

WB 1:500 - 1:1000

## Immunogen Information

### Gene ID

5330

### Swiss Prot

Q00722

### Immunogen

Recombinant fusion protein containing a sequence corresponding to amino acids 1-199 of human PLCB2 (NP\_004564.2).

### Synonyms

PLC-beta-2; PLCB2

## Contact

 | 400-999-6126

 | [cn.market@abclonal.com.cn](mailto:cn.market@abclonal.com.cn)

 | [www.abclonal.com.cn](http://www.abclonal.com.cn)

## Product Information

### Source

Rabbit

### Isotype

IgG

### Purification

Affinity purification

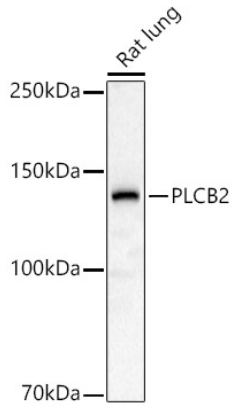
### Storage

Store at -20°C. Avoid freeze / thaw cycles.

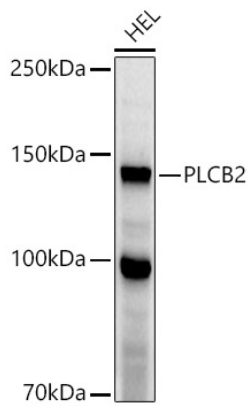
Buffer: PBS with 0.05% proclin300,50% glycerol,pH7.3.

## Validation Data

---



Western blot analysis of extracts of Rat lung, using PLCB2 antibody (A8141) at 1:1000 dilution.  
Secondary antibody: HRP Goat Anti-Rabbit IgG (H+L) (AS014) at 1:10000 dilution.  
Lysates/proteins: 25 $\mu$ g per lane.  
Blocking buffer: 3% nonfat dry milk in TBST.  
Detection: ECL Basic Kit (RM00020).  
Exposure time: 180s.



Western blot analysis of extracts of HEL cells, using PLCB2 antibody (A8141) at 1:1000 dilution.  
Secondary antibody: HRP Goat Anti-Rabbit IgG (H+L) (AS014) at 1:10000 dilution.  
Lysates/proteins: 25 $\mu$ g per lane.  
Blocking buffer: 3% nonfat dry milk in TBST.  
Detection: ECL Enhanced Kit (RM00021).  
Exposure time: 90s.