

NPY4R Rabbit pAb

Catalog No.: A8143

Basic Information

Observed MW

42kDa

Calculated MW

42kDa

Category

Primary antibody

Applications

WB, ELISA

Cross-Reactivity

Human

Background

Enables pancreatic polypeptide receptor activity and peptide hormone binding activity. Involved in G protein-coupled receptor signaling pathway. Located in membrane.

Recommended Dilutions

WB 1:500 - 1:2000

ELISA Recommended starting concentration is 1 µg/mL. Please optimize the concentration based on your specific assay requirements.

Immunogen Information

Gene ID

5540

Swiss Prot

P50391

Immunogen

Recombinant protein (or fragment). This information is considered to be commercially sensitive.

Synonyms

Y4; PP1; PPYR1; NPY4-R; NPY4R

Contact

☎ | 400-999-6126

✉ | cn.market@abclonal.com.cn

🌐 | www.abclonal.com.cn

Product Information

Source

Rabbit

Isotype

IgG

Purification

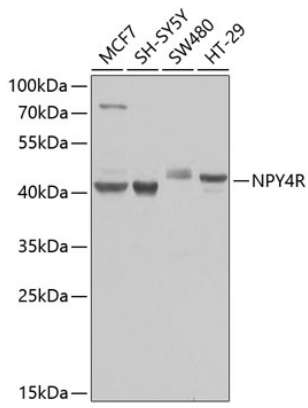
Affinity purification

Storage

Store at -20°C. Avoid freeze / thaw cycles.

Buffer: PBS containing 50% glycerol, preserved with proclin300 or sodium azide (as specified on the Certificate of Analysis), pH 7.3.

Validation Data



Western blot analysis of various lysates using NPY4R Rabbit pAb (A8143) at 1:1000 dilution.
Secondary antibody: HRP-conjugated Goat anti-Rabbit IgG (H+L) (AS014) at 1:10000 dilution.
Lysates/proteins: 25µg per lane.
Blocking buffer: 3% nonfat dry milk in TBST.
Detection: ECL Basic Kit (RM00020).
Exposure time: 1s.