

# KDM6A Rabbit pAb

Catalog No.: A8159 **4 Publications**

## Basic Information

### Observed MW

180kDa

### Calculated MW

154kDa/157kDa

### Category

Primary antibody

### Applications

WB,IHC-P,ELISA

### Cross-Reactivity

Human, Mouse, Rat

## Background

Enables DNA binding activity; histone H3-tri/di-methyl-lysine-27 demethylase activity; and identical protein binding activity. Involved in chromatin remodeling. Acts upstream of or within several processes, including chordate embryonic development; embryonic morphogenesis; and histone H3-K27 demethylation. Located in nucleus. Part of histone methyltransferase complex. Is expressed in several structures, including early conceptus; gonad; liver; lung; and spleen. Used to study chronic myelomonocytic leukemia. Human ortholog(s) of this gene implicated in several diseases, including Kabuki syndrome; bladder urothelial carcinoma; gastrointestinal system cancer (multiple); lung carcinoma (multiple); and triple-receptor negative breast cancer. Orthologous to human KDM6A (lysine demethylase 6A).

## Recommended Dilutions

**WB** 1:500 - 1:1000

**IHC-P** 1:50 - 1:200

**ELISA** Recommended starting concentration is 1 µg/mL. Please optimize the concentration based on your specific assay requirements.

## Immunogen Information

### Gene ID

22289

### Swiss Prot

### Immunogen

Recombinant fusion protein containing a sequence corresponding to amino acids 550-700 of mouse KDM6A (NP\_033509.1).

### Synonyms

Utx; KDM6A

## Contact

☎ | 400-999-6126

✉ | [cn.market@abclonal.com.cn](mailto:cn.market@abclonal.com.cn)

🌐 | [www.abclonal.com.cn](http://www.abclonal.com.cn)

## Product Information

### Source

Rabbit

### Isotype

IgG

### Purification

Affinity purification

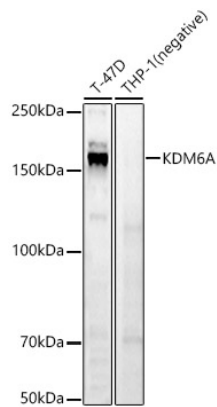
### Storage

Store at -20°C. Avoid freeze / thaw cycles.

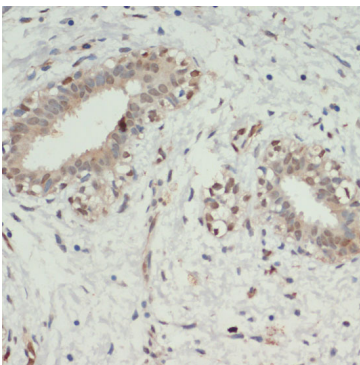
Buffer: PBS with 0.09% Sodium azide,50% glycerol,pH7.3.

## Validation Data

---



Western blot analysis of various lysates, using KDM6A Rabbit pAb (A8159) at 1:700 dilution.  
Secondary antibody: HRP-conjugated Goat anti-Rabbit IgG (H+L) (AS014) at 1:10000 dilution.  
Lysates/proteins: 25µg per lane.  
Blocking buffer: 3% nonfat dry milk in TBST.  
Detection: ECL Basic Kit (RM00020).  
Exposure time: 60s.



Immunohistochemistry analysis of paraffin-embedded Human breast cancer using KDM6A Rabbit pAb (A8159) at dilution of 1:200 (40x lens). Microwave antigen retrieval performed with 0.01M PBS Buffer (pH 7.2) prior to IHC staining.