

SLC9A6 Rabbit pAb

Catalog No.: A8187

Basic Information

Observed MW

60kDa

Calculated MW

78kDa

Category

Primary antibody

Applications

WB, ELISA

Cross-Reactivity

Mouse

Background

This gene encodes a sodium-hydrogen exchanger that is a member of the solute carrier family 9. The encoded protein localizes to early and recycling endosomes and may be involved in regulating endosomal pH and volume. Defects in this gene are associated with X-linked syndromic cognitive disability, Christianson type. Alternate splicing results in multiple transcript variants.

Recommended Dilutions

WB 1:500 - 1:2000

ELISA Recommended starting concentration is 1 µg/mL. Please optimize the concentration based on your specific assay requirements.

Immunogen Information

Gene ID

10479

Swiss Prot

Q92581

Immunogen

Recombinant protein (or fragment). This information is considered to be commercially sensitive.

Synonyms

MRSA; NHE6; MRXSCH; SLC9A6

Contact

☎ | 400-999-6126

✉ | cn.market@abclonal.com.cn

🌐 | www.abclonal.com.cn

Product Information

Source

Rabbit

Isotype

IgG

Purification

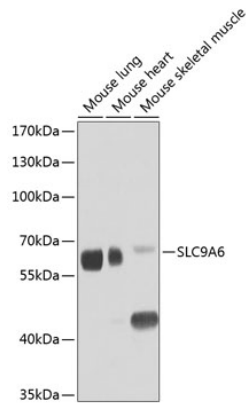
Affinity purification

Storage

Store at -20°C. Avoid freeze / thaw cycles.

Buffer: PBS containing 50% glycerol, preserved with proclin300 or sodium azide (as specified on the Certificate of Analysis), pH 7.3.

Validation Data



Western blot analysis of various lysates using SLC9A6 Rabbit pAb (A8187) at 1:1000 dilution.
Secondary antibody: HRP-conjugated Goat anti-Rabbit IgG (H+L) (AS014) at 1:10000 dilution.
Lysates/proteins: 25 μ g per lane.
Blocking buffer: 3% nonfat dry milk in TBST.
Detection: ECL Basic Kit (RM00020).
Exposure time: 90s.