

ATP6 Rabbit pAb

Catalog No.: A8193 **9 Publications**

Basic Information

Observed MW

20kDa

Calculated MW

25kDa

Category

Primary antibody

Applications

WB,IHC-P,IF/ICC,ELISA

Cross-Reactivity

Human, Mouse

Background

Predicted to contribute to proton-transporting ATP synthase activity, rotational mechanism. Predicted to be involved in mitochondrial ATP synthesis coupled proton transport. Located in mitochondrion. Is expressed in several structures, including alimentary system; brain; heart; integumental system; and sensory organ. Human ortholog(s) of this gene implicated in Leber hereditary optic neuropathy; NARP syndrome; Parkinson's disease; multiple sclerosis; and systemic lupus erythematosus. Orthologous to human MT-ATP6 (mitochondrially encoded ATP synthase membrane subunit 6).

Recommended Dilutions

WB 1:500 - 1:2000

IHC-P 1:100 - 1:200

IF/ICC 1:50 - 1:200

ELISA Recommended starting concentration is 1 µg/mL. Please optimize the concentration based on your specific assay requirements.

Immunogen Information

Gene ID

17705

Swiss Prot

P00848

Immunogen

A synthetic peptide corresponding to a sequence within amino acids 127-226 of mouse ATP6 (NP_904333.1).

Synonyms

MT-ATP6; MTATP6; ATPASE6

Contact

☎ | 400-999-6126

✉ | cn.market@abclonal.com.cn

🌐 | www.abclonal.com.cn

Product Information

Source

Rabbit

Isotype

IgG

Purification

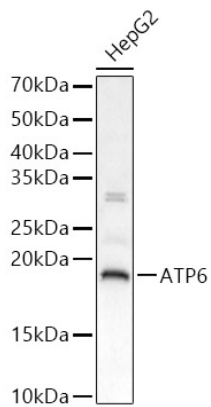
Affinity purification

Storage

Store at -20°C. Avoid freeze / thaw cycles.

Buffer: PBS with 0.09% Sodium azide,50% glycerol,pH7.3.

Validation Data



Western blot analysis of lysates from HepG2 cells, using ATP6 Rabbit pAb (A8193) at 1:2000-1:2000 dilution.

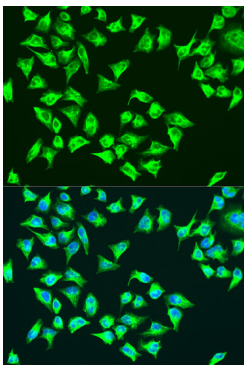
Secondary antibody: HRP-conjugated Goat anti-Rabbit IgG (H+L) (AS014) at 1:10000 dilution.

Lysates/proteins: 25µg per lane.

Blocking buffer: 3% nonfat dry milk in TBST.

Detection: ECL Basic Kit (RM00020).

Exposure time: 20s.



Immunofluorescence analysis of U2OS cells using ATP6 Rabbit pAb (A8193) at dilution of 1:100. Secondary antibody: Cy3-conjugated Goat anti-Rabbit IgG (H+L) (AS007) at 1:500 dilution. Blue: DAPI for nuclear staining.