

IL36RN Rabbit pAb

Catalog No.: A8205

Basic Information

Observed MW

17kDa

Calculated MW

17kDa

Category

Primary antibody

Applications

ELISA, WB

Cross-Reactivity

Mouse

Background

The protein encoded by this gene is a member of the interleukin 1 cytokine family. This cytokine was shown to specifically inhibit the activation of NF-kappaB induced by interleukin 1 family, member 6 (IL1F6). This gene and eight other interleukin 1 family genes form a cytokine gene cluster on chromosome 2. Two alternatively spliced transcript variants encoding the same protein have been reported.

Recommended Dilutions

WB 1:500 - 1:2000

Immunogen Information

Gene ID

26525

Swiss Prot

Q9UBH0

Immunogen

Recombinant fusion protein containing a sequence corresponding to amino acids 1-155 of human IL36RN (NP_036407.1).

Synonyms

FIL1; FIL1D; IL1F5; IL1L1; PSORP; IL1HY1; IL1RP3; IL36RA; IL-36Ra; PSORS14; FIL1(Delta); IL36RN

Contact

☎ | 400-999-6126

✉ | cn.market@abclonal.com.cn

🌐 | www.abclonal.com.cn

Product Information

Source

Rabbit

Isotype

IgG

Purification

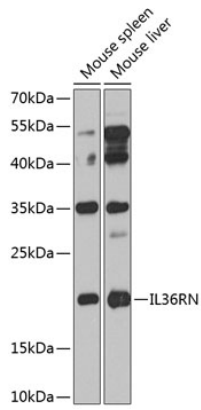
Affinity purification

Storage

Store at -20°C. Avoid freeze / thaw cycles.

Buffer: PBS with 0.02% sodium azide, 50% glycerol, pH 7.3.

Validation Data



Western blot analysis of extracts of various cell lines, using IL36RN antibody (A8205) at 1:1000 dilution.
Secondary antibody: HRP Goat Anti-Rabbit IgG (H+L) (AS014) at 1:10000 dilution.
Lysates/proteins: 25µg per lane.
Blocking buffer: 3% nonfat dry milk in TBST.
Detection: ECL Enhanced Kit (RM00021).
Exposure time: 60s.