

SLC27A6 Rabbit pAb

Catalog No.: A8208

Basic Information

Observed MW

70kDa

Calculated MW

70kDa

Category

Primary antibody

Applications

ELISA, WB

Cross-Reactivity

Human, Mouse

Background

This gene encodes a member of the fatty acid transport protein family (FATP). FATPs are involved in the uptake of long-chain fatty acids and have unique expression patterns. Alternatively spliced transcript variants encoding the same protein have been found for this gene.

Recommended Dilutions

WB 1:500 - 1:2000

Immunogen Information

Gene ID

28965

Swiss Prot

Q9Y2P4

Immunogen

Recombinant fusion protein containing a sequence corresponding to amino acids 370-619 of human SLC27A6 (NP_054750.1).

Synonyms

FATP6; ACSVL2; FACVL2; VLCS-H1; SLC27A6

Contact

 | 400-999-6126

 | cn.market@abclonal.com.cn

 | www.abclonal.com.cn

Product Information

Source

Rabbit

Isotype

IgG

Purification

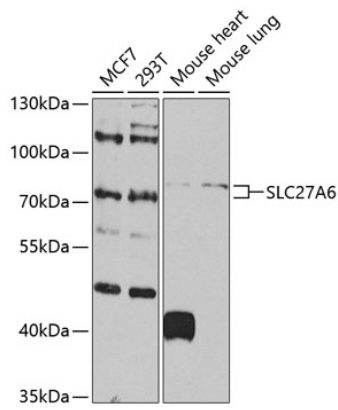
Affinity purification

Storage

Store at -20°C. Avoid freeze / thaw cycles.

Buffer: PBS with 0.05% proclin300, 50% glycerol, pH7.3.

Validation Data



Western blot analysis of extracts of various cell lines, using SLC27A6 antibody (A8208) at 1:1000 dilution.
Secondary antibody: HRP Goat Anti-Rabbit IgG (H+L) (AS014) at 1:10000 dilution.
Lysates/proteins: 25µg per lane.
Blocking buffer: 3% nonfat dry milk in TBST.
Detection: ECL Basic Kit (RM00020).
Exposure time: 90s.