

CEP55 Rabbit pAb

Catalog No.: A8229

Basic Information

Observed MW

60kDa

Calculated MW

54kDa

Category

Primary antibody

Applications

ELISA, WB, IF/ICC

Cross-Reactivity

Human, Mouse, Rat

Background

Enables identical protein binding activity. Involved in cranial skeletal system development; establishment of protein localization; and midbody abscission. Acts upstream of or within mitotic cytokinesis. Located in Flemming body; centriolar satellite; and plasma membrane. Implicated in multinucleated neurons, anhydramnios, renal dysplasia, cerebellar hypoplasia and hydranencephaly.

Recommended Dilutions

WB 1:500 - 1:2000

IF/ICC 1:50 - 1:200

Immunogen Information

Gene ID

55165

Swiss Prot

Q53EZ4

Immunogen

Recombinant fusion protein containing a sequence corresponding to amino acids 1-260 of human CEP55 (NP_060601.3).

Synonyms

CT111; MARCH; URCC6; C10orf3; CEP55

Contact

☎ | 400-999-6126

✉ | cn.market@abclonal.com.cn

🌐 | www.abclonal.com.cn

Product Information

Source

Rabbit

Isotype

IgG

Purification

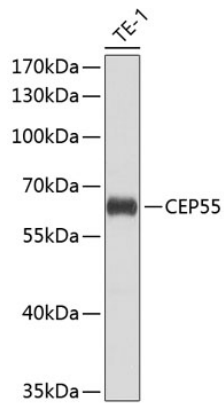
Affinity purification

Storage

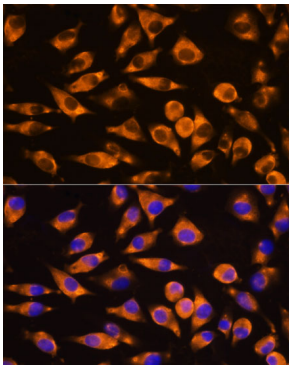
Store at -20°C. Avoid freeze / thaw cycles.

Buffer: PBS with 0.02% sodium azide, 50% glycerol, pH 7.3.

Validation Data



Western blot analysis of extracts of THP-1 cells, using CEP55 antibody (A8229) at 1:1000 dilution.
Secondary antibody: HRP Goat Anti-Rabbit IgG (H+L) (AS014) at 1:10000 dilution.
Lysates/proteins: 25µg per lane.
Blocking buffer: 3% nonfat dry milk in TBST.
Detection: ECL Basic Kit (RM00020).
Exposure time: 15s.



Immunofluorescence analysis of L929 cells using CEP55 antibody (A8229) at dilution of 1:100. Blue: DAPI for nuclear staining.