

NLRP2 Rabbit pAb

Catalog No.: A8233 **2 Publications**

Basic Information

Observed MW

120kDa

Calculated MW

121kDa

Category

Primary antibody

Applications

ELISA,WB,IF/ICC

Cross-Reactivity

Human, Mouse

Background

This gene is a member of the nucleotide-binding and leucine-rich repeat receptor (NLR) family, and is predicted to contain an N-terminal pyrin effector domain (PYD), a centrally-located nucleotide-binding and oligomerization domain (NACHT) and C-terminal leucine-rich repeats (LRR). Members of this gene family are thought to be important regulators of immune responses. This gene product interacts with components of the I κ B kinase (IKK) complex, and can regulate both caspase-1 and NF- κ B (nuclear factor kappa-light-chain-enhancer of activated B cells) activity. The pyrin domain is necessary and sufficient for suppression of NF- κ B activity. An allelic variant (rs147585490) has been found that is incapable of blocking the transcriptional activity of NF- κ B. Alternative splicing results in multiple transcript variants encoding different isoforms.

Recommended Dilutions

WB	1:500 - 1:1000
IF/ICC	1:50 - 1:200

Immunogen Information

Gene ID

55655

Swiss Prot

Q9NX02

Immunogen

Recombinant fusion protein containing a sequence corresponding to amino acids 665-820 of human NLRP2 (NP_060322.1).

Synonyms

NBS1; PAN1; NALP2; PYPAF2; CLR19.9; NLRP2

Contact

 | 400-999-6126 | cn.market@abclonal.com.cn | www.abclonal.com.cn

Product Information

Source

Rabbit

Isotype

IgG

Purification

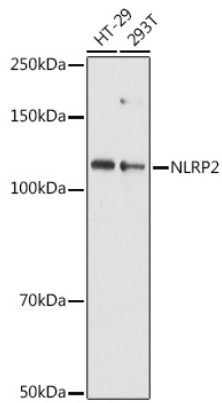
Affinity purification

Storage

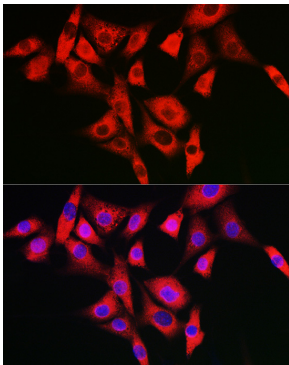
Store at -20°C. Avoid freeze / thaw cycles.

Buffer: PBS with 0.01% thimerosal, 50% glycerol, pH7.3.

Validation Data



Western blot analysis of extracts of various cell lines, using NLRP2 antibody (A8233) at 1:1000 dilution. Secondary antibody: HRP Goat Anti-Rabbit IgG (H+L) (AS014) at 1:10000 dilution. Lysates/proteins: 25µg per lane. Blocking buffer: 3% nonfat dry milk in TBST. Detection: ECL Basic Kit (RM00020). Exposure time: 90s.



Immunofluorescence analysis of NIH/3T3 cells using NLRP2 Rabbit pAb (A8233) at dilution of 1:100 (40x lens). Blue: DAPI for nuclear staining.