

# KANSL3 Rabbit pAb

Catalog No.: A8234 **1 Publications**

## Basic Information

### Observed MW

120kDa

### Calculated MW

96kDa

### Category

Primary antibody

### Applications

ELISA, WB

### Cross-Reactivity

Human

## Background

Involved in histone H4-K16 acetylation; histone H4-K5 acetylation; and histone H4-K8 acetylation. Located in nucleoplasm. Part of histone acetyltransferase complex.

## Recommended Dilutions

WB 1:500 - 1:2000

## Immunogen Information

### Gene ID

55683

### Swiss Prot

Q9P2N6

### Immunogen

Recombinant fusion protein containing a sequence corresponding to amino acids 1-200 of human KANSL3 (NP\_001108488.1).

### Synonyms

NSL3; Rcd1; KIAA1310; KANSL3

## Contact

 | 400-999-6126

 | [cn.market@abclonal.com.cn](mailto:cn.market@abclonal.com.cn)

 | [www.abclonal.com.cn](http://www.abclonal.com.cn)

## Product Information

### Source

Rabbit

### Isotype

IgG

### Purification

Affinity purification

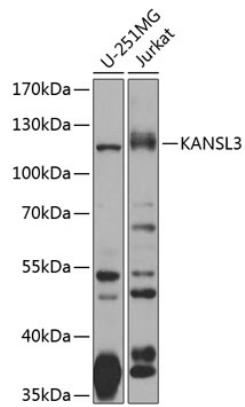
### Storage

Store at -20°C. Avoid freeze / thaw cycles.

Buffer: PBS with 0.02% sodium azide, 50% glycerol, pH7.3.

## Validation Data

---



Western blot analysis of extracts of various cell lines, using KANSL3 antibody (A8234) at 1:1000 dilution.  
Secondary antibody: HRP Goat Anti-Rabbit IgG (H+L) (AS014) at 1:10000 dilution.  
Lysates/proteins: 25µg per lane.  
Blocking buffer: 3% nonfat dry milk in TBST.  
Detection: ECL Basic Kit (RM00020).  
Exposure time: 15s.