

PELI1 Rabbit pAb

Catalog No.: A8240

Basic Information

Observed MW

46kDa

Calculated MW

46kDa

Category

Primary antibody

Applications

ELISA, WB

Cross-Reactivity

Rat

Background

Enables ubiquitin protein ligase activity. Involved in several processes, including negative regulation of necroptotic process; protein polyubiquitination; and response to lipopolysaccharide. Predicted to be located in cytosol.

Recommended Dilutions

WB 1:500 - 1:2000

Immunogen Information

Gene ID

57162

Swiss Prot

Q96FA3

Immunogen

Recombinant fusion protein containing a sequence corresponding to amino acids 1-250 of human PELI1 (NP_065702.2).

Synonyms

PELI1

Contact

☎ | 400-999-6126

✉ | cn.market@abclonal.com.cn

🌐 | www.abclonal.com.cn

Product Information

Source

Rabbit

Isotype

IgG

Purification

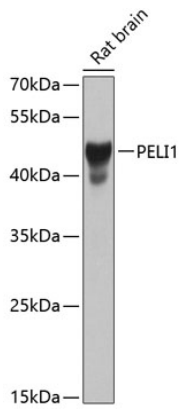
Affinity purification

Storage

Store at -20°C. Avoid freeze / thaw cycles.

Buffer: PBS with 0.02% sodium azide, 50% glycerol, pH 7.3.

Validation Data



Western blot analysis of extracts of rat brain, using PELI1 antibody (A8240) at 1:1000 dilution.
Secondary antibody: HRP Goat Anti-Rabbit IgG (H+L) (AS014) at 1:10000 dilution.
Lysates/proteins: 25 μ g per lane.
Blocking buffer: 3% nonfat dry milk in TBST.
Detection: ECL Basic Kit (RM00020).
Exposure time: 15s.