

SLC5A7 Rabbit pAb

Catalog No.: A8247

Basic Information

Observed MW

66-75kDa

Calculated MW

63kDa

Category

Primary antibody

Applications

ELISA, WB, IF/ICC

Cross-Reactivity

Human, Mouse, Rat

Background

This gene encodes a sodium ion- and chloride ion-dependent high-affinity transporter that mediates choline uptake for acetylcholine synthesis in cholinergic neurons. The protein transports choline from the extracellular space into presynaptic terminals for synthesis into acetylcholine. Increased choline uptake results from increased density of this protein in synaptosomal plasma membranes in response to depolarization of cholinergic terminals. Dysfunction of cholinergic signaling has been implicated in various disorders including depression, attention-deficit disorder, and schizophrenia. An allelic variant of this gene is associated with autosomal dominant distal hereditary motor neuropathy type VIIA. Alternative splicing results in multiple transcript variants.

Recommended Dilutions

WB	1:500 - 1:2000
IF/ICC	1:50 - 1:200

Immunogen Information

Gene ID

60482

Swiss Prot

Q9GZV3

Immunogen

Recombinant fusion protein containing a sequence corresponding to amino acids 503-580 of human SLC5A7 (NP_068587.1).

Synonyms

CHT; CHT1; CMS20; HMN7A; DHMNVP; SLC5A7

Contact

☎ | 400-999-6126

✉ | cn.market@abclonal.com.cn

🌐 | www.abclonal.com.cn

Product Information

Source

Rabbit

Isotype

IgG

Purification

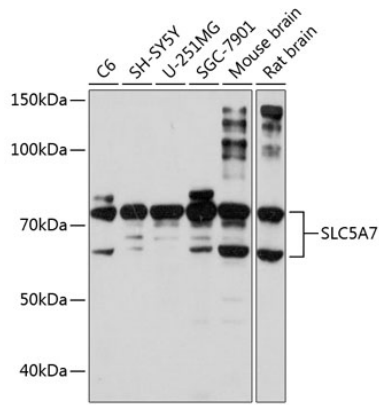
Affinity purification

Storage

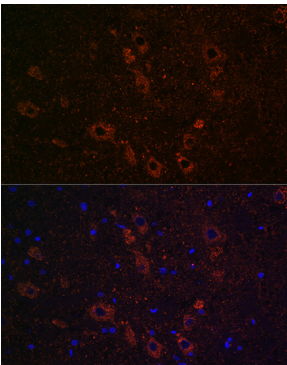
Store at -20°C. Avoid freeze / thaw cycles.

Buffer: PBS with 0.01% thimerosal, 50% glycerol, pH7.3.

Validation Data



Western blot analysis of various lysates using SLC5A7 Rabbit pAb (A8247) at 1:1000 dilution.
Secondary antibody: HRP Goat Anti-Rabbit IgG (H+L) (AS014) at 1:10000 dilution.
Lysates/proteins: 25µg per lane.
Blocking buffer: 3% nonfat dry milk in TBST.
Detection: ECL Basic Kit (RM00020).
Exposure time: 90s.



Immunofluorescence analysis of paraffin-embedded rat brain using SLC5A7 Rabbit pAb (A8247) at dilution of 1:100 (40x lens).
Secondary antibody: Cy3 Goat Anti-Rabbit IgG (H+L) (AS007) at 1:500 dilution. Blue: DAPI for nuclear staining.