

KDM7A Rabbit pAb

Catalog No.: A8266

1 Publications

Basic Information

Observed MW

106kDa

Calculated MW

92kDa/106kDa

Category

Primary antibody

Applications

WB, ELISA

Cross-Reactivity

Human, Mouse, Rat

Background

Enables histone H3-methyl-lysine-9 demethylase activity and histone H3-tri/di-methyl-lysine-27 demethylase activity. Involved in histone H3-K27 demethylation; histone H3-K9 demethylation; and positive regulation of transcription, DNA-templated. Predicted to be located in nucleolus and nucleoplasm. Human ortholog(s) of this gene implicated in melanoma. Orthologous to human KDM7A (lysine demethylase 7A).

Recommended Dilutions

WB 1:500 - 1:2000

ELISA Recommended starting concentration is 1 µg/mL. Please optimize the concentration based on your specific assay requirements.

Immunogen Information

Gene ID

338523

Swiss Prot

Q3UWM4

Immunogen

Synthetic peptide. This information is considered to be commercially sensitive.

Synonyms

Jhdm1d; mKIAA1718; A630082K20Rik; KDM7A

Contact

☎ | 400-999-6126

✉ | cn.market@abclonal.com.cn

🌐 | www.abclonal.com.cn

Product Information

Source

Rabbit

Isotype

IgG

Purification

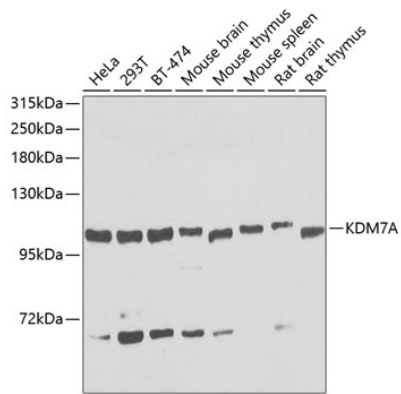
Affinity purification

Storage

Store at -20°C. Avoid freeze / thaw cycles.

Buffer: PBS containing 50% glycerol, preserved with proclin300 or sodium azide (as specified on the Certificate of Analysis), pH 7.3.

Validation Data



Western blot analysis of various lysates using KDM7A Rabbit pAb (A8266) at 1:1000 dilution.
Secondary antibody: HRP-conjugated Goat anti-Rabbit IgG (H+L) (AS014) at 1:10000 dilution.
Lysates/proteins: 25 μ g per lane.
Blocking buffer: 3% nonfat dry milk in TBST.
Detection: ECL Basic Kit (RM00020).
Exposure time: 30s.