

LLGL2 Rabbit pAb

Catalog No.: A8284

Basic Information

Observed MW

113kDa

Calculated MW

114kDa

Category

Primary antibody

Applications

ELISA, WB, IF/ICC

Cross-Reactivity

Human, Mouse, Rat

Background

Predicted to enable GTPase activator activity; PDZ domain binding activity; and myosin II binding activity. Acts upstream of or within establishment or maintenance of polarity of embryonic epithelium; labyrinthine layer development; and post-embryonic development. Predicted to be located in cytosol and intracellular membrane-bounded organelle. Predicted to be active in cortical actin cytoskeleton and plasma membrane. Is expressed in several structures, including cardiovascular system; endocrine gland; genitourinary system; gut; and nasal cavity epithelium. Orthologous to human LLGL2 (LLGL scribble cell polarity complex component 2).

Recommended Dilutions

WB 1:500 - 1:2000

IF/ICC 1:50 - 1:200

Immunogen Information

Gene ID

217325

Swiss Prot

Immunogen

Recombinant fusion protein containing a sequence corresponding to amino acids 620-819 of mouse LLGL2 (NP_663413.2).

Synonyms

Lglh2; 9130006H11Rik; LLGL2

Contact

☎ | 400-999-6126

✉ | cn.market@abclonal.com.cn

🌐 | www.abclonal.com.cn

Product Information

Source

Rabbit

Isotype

IgG

Purification

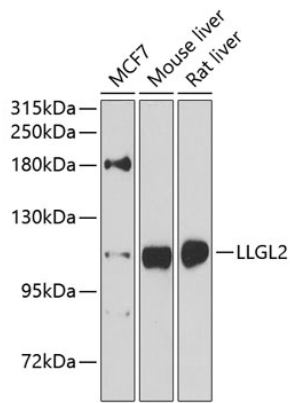
Affinity purification

Storage

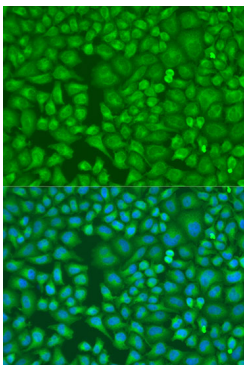
Store at -20°C. Avoid freeze / thaw cycles.

Buffer: PBS with 0.02% sodium azide, 50% glycerol, pH 7.3.

Validation Data



Western blot analysis of extracts of various cell lines, using LLGL2 antibody (A8284) at 1:1000 dilution.
Secondary antibody: HRP Goat Anti-Rabbit IgG (H+L) (AS014) at 1:10000 dilution.
Lysates/proteins: 25µg per lane.
Blocking buffer: 3% nonfat dry milk in TBST.
Detection: ECL Enhanced Kit (RM00021).
Exposure time: 5s.



Immunofluorescence analysis of U2OS cells using LLGL2 antibody (A8284) at dilution of 1:100. Blue: DAPI for nuclear staining.