

CEP57L1 Rabbit pAb

Catalog No.: A8290

Basic Information

Observed MW

60kDa

Calculated MW

54kDa

Category

Primary antibody

Applications

ELISA, WB

Cross-Reactivity

Human

Background

Enables identical protein binding activity. Predicted to be located in cytoplasm and microtubule. Predicted to be active in centrosome.

Recommended Dilutions

WB 1:500 - 1:2000

Immunogen Information

Gene ID

285753

Swiss Prot

Q8IYX8

Immunogen

Recombinant fusion protein containing a sequence corresponding to amino acids 1-167 of human CEP57L1 (NP_776191.1).

Synonyms

cep57R; C6orf182; bA487F23.2; CEP57L1

Contact

☎ | 400-999-6126

✉ | cn.market@abclonal.com.cn

🌐 | www.abclonal.com.cn

Product Information

Source

Rabbit

Isotype

IgG

Purification

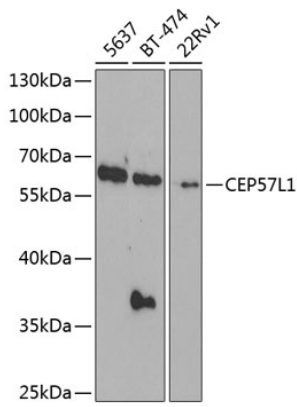
Affinity purification

Storage

Store at -20°C. Avoid freeze / thaw cycles.

Buffer: PBS with 0.02% sodium azide, 50% glycerol, pH7.3.

Validation Data



Western blot analysis of extracts of various cell lines, using CEP57L1 antibody (A8290) at 1:1000 dilution.
Secondary antibody: HRP Goat Anti-Rabbit IgG (H+L) (AS014) at 1:10000 dilution.
Lysates/proteins: 25µg per lane.
Blocking buffer: 3% nonfat dry milk in TBST.
Detection: ECL Basic Kit (RM00020).
Exposure time: 90s.