

# Mannose Receptor/CD206 Rabbit pAb

Catalog No.: A8301SP **39 Publications**

## Basic Information

### Observed MW

190-250 kDa

### Calculated MW

57 kDa/166 kDa

### Category

Primary antibody

### Applications

WB,IF-P,IHC-P,ELISA

### Cross-Reactivity

Human

## Background

The recognition of complex carbohydrate structures on glycoproteins is an important part of several biological processes, including cell-cell recognition, serum glycoprotein turnover, and neutralization of pathogens. The protein encoded by this gene is a type I membrane receptor that mediates the endocytosis of glycoproteins by macrophages. The protein has been shown to bind high-mannose structures on the surface of potentially pathogenic viruses, bacteria, and fungi so that they can be neutralized by phagocytic engulfment.

## Recommended Dilutions

**WB** 1:1000 - 1:5000

**IF-P** 1:100 - 1:400

**IHC-P** 1:500 - 1:2000

### ELISA

Recommended starting concentration is 1 µg/mL.

Please optimize the concentration based on your specific assay requirements. For high-ratio antibody dilutions ( $\geq 1:10000$ ) a sequential dilution method is strongly recommended to ensure measurement accuracy.

## Immunogen Information

### Gene ID

4360

### Swiss Prot

P22897

### Immunogen

This information is considered to be commercially sensitive.

### Synonyms

MMR; hMR; CD206; MRC1L1; CLEC13D; CLEC13DL; bA541I19.1; Mannose Receptor/CD206

## Product Information

### Source

Rabbit

### Isotype

IgG

### Purification

Affinity purification

### Storage

Store at -20°C. Avoid freeze / thaw cycles.

Buffer: PBS, pH 7.3, containing 50% glycerol. Preserved with Proclin300 or sodium azide.

May contain 0.05% BSA as specified on the Certificate of Analysis.

## Contact

---

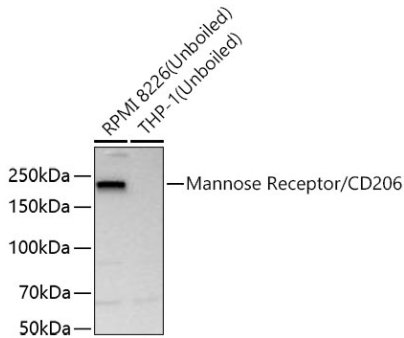
 | 400-999-6126

 | [cn.market@abclonal.com.cn](mailto:cn.market@abclonal.com.cn)

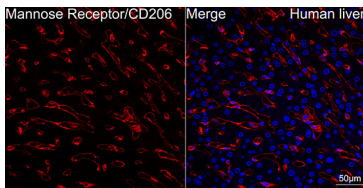
 | [www.abclonal.com.cn](http://www.abclonal.com.cn)

---

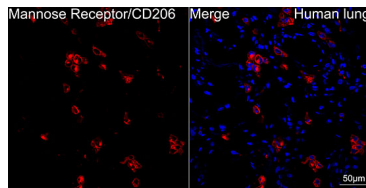
## Validation Data



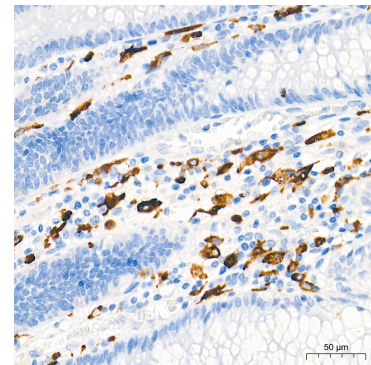
Western blot analysis of various lysates using Mannose Receptor/CD206 Rabbit pAb (A8301SP) at 1:5000 dilution incubated overnight at 4°C. Secondary antibody: HRP-conjugated Goat anti-Rabbit IgG (H+L) (AS014) at 1:10000 dilution. Lysates/proteins: 25 µg per lane. Blocking buffer: 3% nonfat dry milk in TBST. Detection: ECL Basic Kit (RM00020). Exposure time: 60 s.



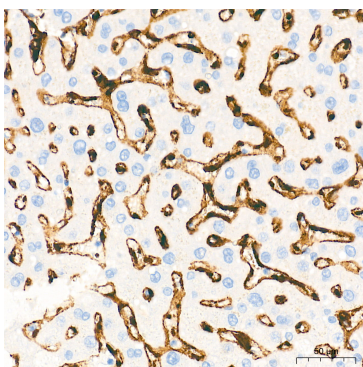
Confocal imaging of paraffin-embedded Human liver tissue using Mannose Receptor/CD206 Rabbit pAb (A8301SP, dilution 1:200) followed by a further incubation with Cy3-conjugated Goat anti-Rabbit IgG (H+L) (AS007, dilution 1:500) (Red). DAPI was used for nuclear staining (Blue). High pressure antigen retrieval performed with 0.01M Citrate Buffer (pH 6.0) prior to IF staining. Objective: 40x.



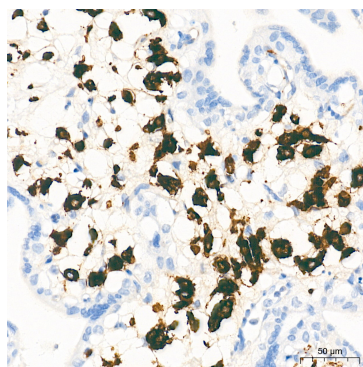
Confocal imaging of paraffin-embedded Human lung tissue using Mannose Receptor/CD206 Rabbit pAb (A8301SP, dilution 1:200) followed by a further incubation with Cy3-conjugated Goat anti-Rabbit IgG (H+L) (AS007, dilution 1:500) (Red). DAPI was used for nuclear staining (Blue). High pressure antigen retrieval performed with 0.01M Citrate Buffer (pH 6.0) prior to IF staining. Objective: 40x.



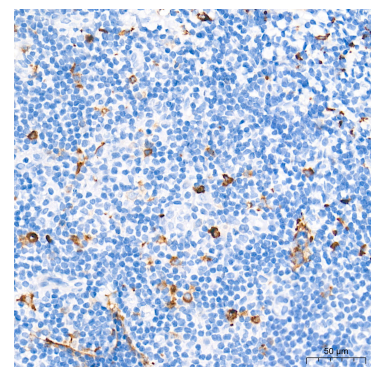
Immunohistochemistry analysis of paraffin-embedded Human colon tissue using Mannose Receptor/CD206 Rabbit pAb (A8301SP) at a dilution of 1:800 (40x lens). High pressure antigen retrieval performed with 0.01M Tris-EDTA Buffer (pH 9.0) prior to IHC staining.



Immunohistochemistry analysis of paraffin-embedded Human liver tissue using Mannose Receptor/CD206 Rabbit pAb (A8301SP) at a dilution of 1:800 (40x lens). High pressure antigen retrieval performed with 0.01M Tris-EDTA Buffer (pH 9.0) prior to IHC staining.



Immunohistochemistry analysis of paraffin-embedded Human placenta tissue using Mannose Receptor/CD206 Rabbit pAb (A8301SP) at a dilution of 1:800 (40x lens). High pressure antigen retrieval performed with 0.01M Tris-EDTA Buffer (pH 9.0) prior to IHC staining.



Immunohistochemistry analysis of paraffin-embedded Human tonsil tissue using Mannose Receptor/CD206 Rabbit pAb (A8301SP) at a dilution of 1:800 (40x lens). High pressure antigen retrieval performed with 0.01M Tris-EDTA Buffer (pH 9.0) prior to IHC staining.