

# NOTCH4 Rabbit pAb

Catalog No.: A8303 **3 Publications**

## Basic Information

**Observed MW**

80kDa

**Calculated MW**

210kDa

**Category**

Primary antibody

**Applications**

ELISA,WB,IF/ICC

**Cross-Reactivity**

Human, Mouse, Rat

## Background

This gene encodes a member of the NOTCH family of proteins. Members of this Type I transmembrane protein family share structural characteristics including an extracellular domain consisting of multiple epidermal growth factor-like (EGF) repeats, and an intracellular domain consisting of multiple different domain types. Notch signaling is an evolutionarily conserved intercellular signaling pathway that regulates interactions between physically adjacent cells through binding of Notch family receptors to their cognate ligands. The encoded preproprotein is proteolytically processed in the trans-Golgi network to generate two polypeptide chains that heterodimerize to form the mature cell-surface receptor. This receptor may play a role in vascular, renal and hepatic development. Mutations in this gene may be associated with schizophrenia. Alternative splicing results in multiple transcript variants, at least one of which encodes an isoform that is proteolytically processed.

## Recommended Dilutions

<b>WB</b>	1:100 - 1:500
<b>IF/ICC</b>	1:50 - 1:200

## Immunogen Information

**Gene ID**

4855

**Swiss Prot**

Q99466

**Immunogen**

Recombinant fusion protein containing a sequence corresponding to amino acids 1824-2003 of human NOTCH4 (NP\_004548.3).

**Synonyms**

INT3; NOTCH4

## Contact

 | 400-999-6126 | [cn.market@abclonal.com.cn](mailto:cn.market@abclonal.com.cn) | [www.abclonal.com.cn](http://www.abclonal.com.cn)

## Product Information

**Source**

Rabbit

**Isotype**

IgG

**Purification**

Affinity purification

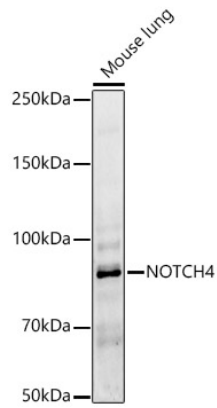
**Storage**

Store at -20°C. Avoid freeze / thaw cycles.

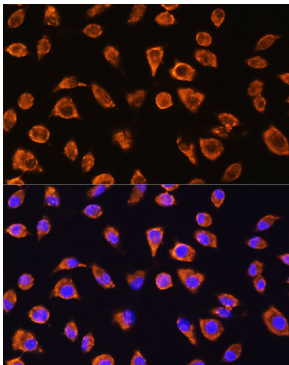
Buffer: PBS with 0.02% sodium azide,50% glycerol,pH7.3.

## Validation Data

---



Western blot analysis of Mouse lung, using NOTCH4 Rabbit pAb (A8303) at 1:400 dilution.  
Secondary antibody: HRP Goat Anti-Rabbit IgG (H+L) (AS014) at 1:10000 dilution.  
Lysates/proteins: 25µg per lane.  
Blocking buffer: 3% nonfat dry milk in TBST.  
Detection: ECL Basic Kit (RM00020).  
Exposure time: 180s.



Immunofluorescence analysis of L929 cells using NOTCH4 Rabbit pAb (A8303) at dilution of 1:100. Blue: DAPI for nuclear staining.