

ERLIN2 Rabbit pAb

Catalog No.: A8314

Basic Information

Observed MW

38kDa

Calculated MW

38kDa

Category

Primary antibody

Applications

ELISA, WB

Cross-Reactivity

Human

Background

This gene encodes a member of the SPFH domain-containing family of lipid raft-associated proteins. The encoded protein is localized to lipid rafts of the endoplasmic reticulum and plays a critical role in inositol 1,4,5-trisphosphate (IP3) signaling by mediating ER-associated degradation of activated IP3 receptors. Mutations in this gene are a cause of spastic paraplegia-18 (SPG18). Alternatively spliced transcript variants encoding multiple isoforms have been observed for this gene.

Recommended Dilutions

WB 1:500 - 1:2000

Immunogen Information

Gene ID

11160

Swiss Prot

O94905

Immunogen

Recombinant fusion protein containing a sequence corresponding to amino acids 25-152 of human ERLIN2 (NP_001003790.1).

Synonyms

NET32; SPFH2; SPG18; C8orf2; Erlin-2; ERLIN2

Contact

☎ | 400-999-6126

✉ | cn.market@abclonal.com.cn

🌐 | www.abclonal.com.cn

Product Information

Source

Rabbit

Isotype

IgG

Purification

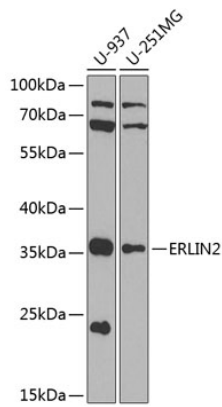
Affinity purification

Storage

Store at -20°C. Avoid freeze / thaw cycles.

Buffer: PBS with 0.02% sodium azide, 50% glycerol, pH7.3.

Validation Data



Western blot analysis of various lysates using ERLIN2 Rabbit pAb (A8314) at 1:1000 dilution.
Secondary antibody: HRP Goat Anti-Rabbit IgG (H+L) (AS014) at 1:10000 dilution.
Lysates/proteins: 25µg per lane.
Blocking buffer: 3% nonfat dry milk in TBST.
Detection: ECL Basic Kit (RM00020).
Exposure time: 90s.