

# CEP44 Rabbit pAb

Catalog No.: A8317 **1 Publications**

## Basic Information

### Observed MW

45kDa

### Calculated MW

44kDa

### Category

Primary antibody

### Applications

ELISA, WB

### Cross-Reactivity

Human, Mouse

## Background

Enables microtubule binding activity. Involved in centriole replication and centriole-centriole cohesion. Located in centriole; centrosome; and spindle pole.

## Recommended Dilutions

WB 1:500 - 1:2000

## Immunogen Information

### Gene ID

80817

### Swiss Prot

Q9C0F1

### Immunogen

Recombinant fusion protein containing a sequence corresponding to amino acids 1-280 of human CEP44 (NP\_001035247.1).

### Synonyms

PS1TP3; KIAA1712; CEP44

## Contact

☎ | 400-999-6126

✉ | [cn.market@abclonal.com.cn](mailto:cn.market@abclonal.com.cn)

🌐 | [www.abclonal.com.cn](http://www.abclonal.com.cn)

## Product Information

### Source

Rabbit

### Isotype

IgG

### Purification

Affinity purification

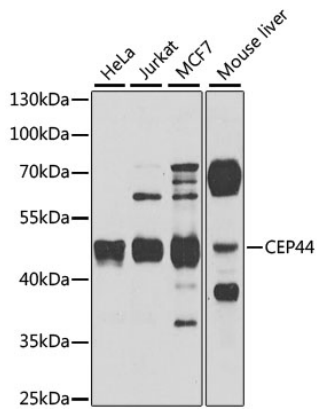
### Storage

Store at -20°C. Avoid freeze / thaw cycles.

Buffer: PBS with 0.02% sodium azide, 50% glycerol, pH7.3.

## Validation Data

---



Western blot analysis of extracts of various cell lines, using CEP44 antibody (A8317) at 1:1000 dilution.  
Secondary antibody: HRP Goat Anti-Rabbit IgG (H+L) (AS014) at 1:10000 dilution.  
Lysates/proteins: 25µg per lane.  
Blocking buffer: 3% nonfat dry milk in TBST.  
Detection: ECL Basic Kit (RM00020).  
Exposure time: 60s.