

# SIK2 Rabbit pAb

Catalog No.: A8321 **1 Publications**

## Basic Information

### Observed MW

129kDa

### Calculated MW

104kDa

### Category

Primary antibody

### Applications

ELISA, WB

### Cross-Reactivity

Human, Mouse, Rat

## Background

Enables ATP binding activity; magnesium ion binding activity; and protein serine/threonine kinase activity. Involved in intracellular signal transduction and protein autophosphorylation. Predicted to be located in nucleus. Predicted to be active in cytoplasm.

## Recommended Dilutions

WB 1:500 - 1:2000

## Immunogen Information

### Gene ID

23235

### Swiss Prot

Q9H0K1

### Immunogen

Recombinant fusion protein containing a sequence corresponding to amino acids 827-926 of human SIK2 (NP\_056006.1).

### Synonyms

QIK; SIK-2; SNF1LK2; LOH11CR1; SIK2

## Contact

 | 400-999-6126

 | [cn.market@abclonal.com.cn](mailto:cn.market@abclonal.com.cn)

 | [www.abclonal.com.cn](http://www.abclonal.com.cn)

## Product Information

### Source

Rabbit

### Isotype

IgG

### Purification

Affinity purification

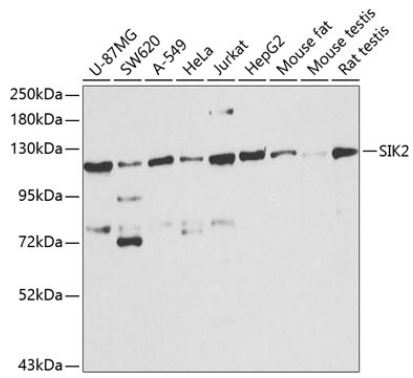
### Storage

Store at -20°C. Avoid freeze / thaw cycles.

Buffer: PBS with 0.02% sodium azide, 50% glycerol, pH 7.3.

## Validation Data

---



Western blot analysis of extracts of various cell lines, using SIK2 antibody (A8321) at 1:1000 dilution.  
Secondary antibody: HRP Goat Anti-Rabbit IgG (H+L) (AS014) at 1:10000 dilution.  
Lysates/proteins: 25µg per lane.  
Blocking buffer: 3% nonfat dry milk in TBST.  
Detection: ECL Basic Kit (RM00020).  
Exposure time: 30s.