

# RNF11 Rabbit pAb

Catalog No.: A8328 **1 Publications**

## Basic Information

### Observed MW

27kDa

### Calculated MW

17kDa

### Category

Primary antibody

### Applications

ELISA, WB

### Cross-Reactivity

Mouse, Rat

## Background

The protein encoded by this gene contains a RING-H2 finger motif, which is known to be important for protein-protein interactions. The expression of this gene has been shown to be induced by mutant RET proteins (MEN2A/MEN2B). The germline mutations in RET gene are known to be responsible for the development of multiple endocrine neoplasia (MEN).

## Recommended Dilutions

WB 1:500 - 1:2000

## Immunogen Information

### Gene ID

26994

### Swiss Prot

Q9Y3C5

### Immunogen

Recombinant fusion protein containing a sequence corresponding to amino acids 1-154 of human RNF11 (NP\_055187.1).

### Synonyms

CGI-123; SID1669; RNF11

## Contact

 | 400-999-6126

 | [cn.market@abclonal.com.cn](mailto:cn.market@abclonal.com.cn)

 | [www.abclonal.com.cn](http://www.abclonal.com.cn)

## Product Information

### Source

Rabbit

### Isotype

IgG

### Purification

Affinity purification

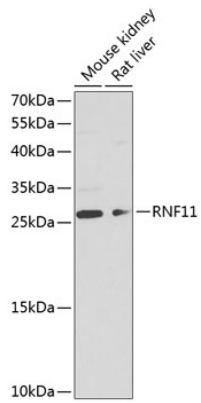
### Storage

Store at -20°C. Avoid freeze / thaw cycles.

Buffer: PBS with 0.02% sodium azide, 50% glycerol, pH7.3.

## Validation Data

---



Western blot analysis of extracts of various cell lines, using RNF11 antibody (A8328) at 1:1000 dilution.  
Secondary antibody: HRP Goat Anti-Rabbit IgG (H+L) (AS014) at 1:10000 dilution.  
Lysates/proteins: 25µg per lane.  
Blocking buffer: 3% nonfat dry milk in TBST.  
Detection: ECL Basic Kit (RM00020).  
Exposure time: 60s.