

UBE2D4 Rabbit pAb

Catalog No.: A8332

Basic Information

Observed MW

17kDa

Calculated MW

17kDa

Category

Primary antibody

Applications

ELISA, WB

Cross-Reactivity

Human, Mouse, Rat

Background

Enables ubiquitin conjugating enzyme activity. Involved in protein polyubiquitination. Acts upstream of or within protein ubiquitination. Predicted to be part of ubiquitin ligase complex. Predicted to be active in nucleus.

Recommended Dilutions

WB 1:500 - 1:2000

Immunogen Information

Gene ID

51619

Swiss Prot

Q9Y2X8

Immunogen

Recombinant fusion protein containing a sequence corresponding to amino acids 1-147 of human UBE2D4 (NP_057067.1).

Synonyms

HBUCE1; UBE2D4

Contact

☎ | 400-999-6126

✉ | cn.market@abclonal.com.cn

🌐 | www.abclonal.com.cn

Product Information

Source

Rabbit

Isotype

IgG

Purification

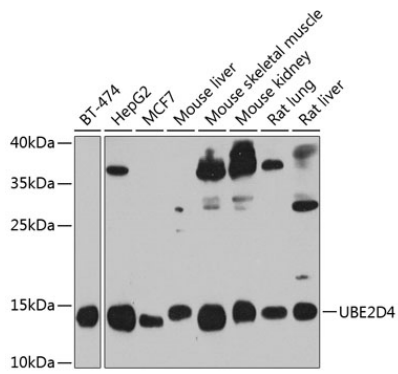
Affinity purification

Storage

Store at -20°C. Avoid freeze / thaw cycles.

Buffer: PBS with 0.02% sodium azide, 50% glycerol, pH 7.3.

Validation Data



Western blot analysis of extracts of various cell lines, using UBE2D4 antibody (A8332) at 1:1000 dilution.
Secondary antibody: HRP Goat Anti-Rabbit IgG (H+L) (AS014) at 1:10000 dilution.
Lysates/proteins: 25µg per lane.
Blocking buffer: 3% nonfat dry milk in TBST.
Detection: ECL Enhanced Kit (RM00021).
Exposure time: 30s.