

# PARP4 Rabbit pAb

Catalog No.: A8343

## Basic Information

### Observed MW

193kDa

### Calculated MW

193kDa

### Category

Primary antibody

### Applications

ELISA, WB

### Cross-Reactivity

Human, Mouse, Rat

## Background

This gene encodes poly(ADP-ribose)transferase-like 1 protein, which is capable of catalyzing a poly(ADP-ribose)ation reaction. This protein has a catalytic domain which is homologous to that of poly (ADP-ribose) transferase, but lacks an N-terminal DNA binding domain which activates the C-terminal catalytic domain of poly (ADP-ribose) transferase. Since this protein is not capable of binding DNA directly, its transferase activity may be activated by other factors such as protein-protein interaction mediated by the extensive carboxyl terminus.

## Recommended Dilutions

WB 1:500 - 1:2000

## Immunogen Information

### Gene ID

143

### Swiss Prot

Q9UKK3

### Immunogen

Recombinant fusion protein containing a sequence corresponding to amino acids 1-300 of human PARP4 (NP\_006428.2).

### Synonyms

PH5P; p193; ARTD4; PARPL; VPARP; VWA5C; PARP-4; VAULT3; ADPRTL1; PARP4

## Contact

☎ | 400-999-6126

✉ | [cn.market@abclonal.com.cn](mailto:cn.market@abclonal.com.cn)

🌐 | [www.abclonal.com.cn](http://www.abclonal.com.cn)

## Product Information

### Source

Rabbit

### Isotype

IgG

### Purification

Affinity purification

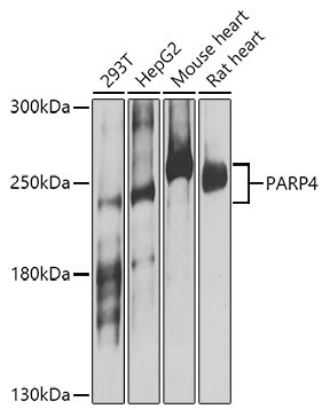
### Storage

Store at -20°C. Avoid freeze / thaw cycles.

Buffer: PBS with 0.02% sodium azide, 50% glycerol, pH 7.3.

## Validation Data

---



Western blot analysis of extracts of various cell lines, using PARP4 antibody (A8343) at 1:1000 dilution.  
Secondary antibody: HRP Goat Anti-Rabbit IgG (H+L) (AS014) at 1:10000 dilution.  
Lysates/proteins: 25 $\mu$ g per lane.  
Blocking buffer: 3% nonfat dry milk in TBST.  
Detection: ECL Basic Kit (RM00020).  
Exposure time: 5s.