

NID1 Rabbit pAb

Catalog No.: A8349

Basic Information

Observed MW

178kDa

Calculated MW

136kDa

Category

Primary antibody

Applications

ELISA, WB

Cross-Reactivity

Human

Background

This gene encodes a member of the nidogen family of basement membrane glycoproteins. The protein interacts with several other components of basement membranes, and may play a role in cell interactions with the extracellular matrix.

Recommended Dilutions

WB 1:500 - 1:2000

Immunogen Information

Gene ID

4811

Swiss Prot

P14543

Immunogen

Recombinant fusion protein containing a sequence corresponding to amino acids 110-400 of human NID1 (NP_002499.2).

Synonyms

NID; NID1

Contact

 | 400-999-6126

 | cn.market@abclonal.com.cn

 | www.abclonal.com.cn

Product Information

Source

Rabbit

Isotype

IgG

Purification

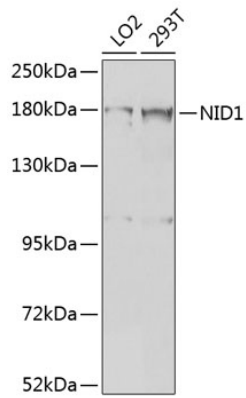
Affinity purification

Storage

Store at -20°C. Avoid freeze / thaw cycles.

Buffer: PBS with 0.02% sodium azide, 50% glycerol, pH7.3.

Validation Data



Western blot analysis of extracts of various cell lines, using NID1 antibody (A8349) at 1:1000 dilution.
Secondary antibody: HRP Goat Anti-Rabbit IgG (H+L) (AS014) at 1:10000 dilution.
Lysates/proteins: 25µg per lane.
Blocking buffer: 3% nonfat dry milk in TBST.
Detection: ECL Basic Kit (RM00020).
Exposure time: 5s.