

PALB2 Rabbit pAb

Catalog No.: A8373 **1 Publications**

Basic Information

Observed MW

150kDa

Calculated MW

131kDa

Category

Primary antibody

Applications

ELISA, WB

Cross-Reactivity

Human

Background

This gene encodes a protein that may function in tumor suppression. This protein binds to and colocalizes with the breast cancer 2 early onset protein (BRCA2) in nuclear foci and likely permits the stable intranuclear localization and accumulation of BRCA2.

Recommended Dilutions

WB 1:500 - 1:2000

Immunogen Information

Gene ID

79728

Swiss Prot

Q86YC2

Immunogen

Recombinant fusion protein containing a sequence corresponding to amino acids 99-198 of human PALB2 (NP_078951.2).

Synonyms

FANCN; PNCA3; PALB2

Contact

 | 400-999-6126

 | cn.market@abclonal.com.cn

 | www.abclonal.com.cn

Product Information

Source

Rabbit

Isotype

IgG

Purification

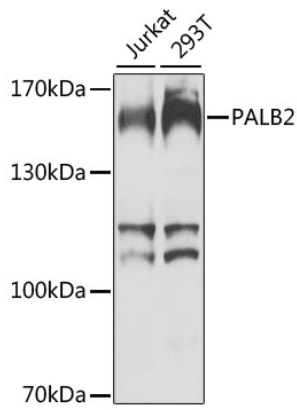
Affinity purification

Storage

Store at -20°C. Avoid freeze / thaw cycles.

Buffer: PBS with 0.02% sodium azide, 50% glycerol, pH 7.3.

Validation Data



Western blot analysis of extracts of various cell lines, using PALB2 antibody (A8373) at 1:1000 dilution.
Secondary antibody: HRP Goat Anti-Rabbit IgG (H+L) (AS014) at 1:10000 dilution.
Lysates/proteins: 25µg per lane.
Blocking buffer: 3% nonfat dry milk in TBST.
Detection: ECL Basic Kit (RM00020).
Exposure time: 60s.