

RAB24 Rabbit pAb

Catalog No.: A8394

2 Publications

Basic Information

Observed MW

23kDa

Calculated MW

23kDa

Category

Primary antibody

Applications

WB,IP,ELISA

Cross-Reactivity

Human, Mouse, Rat

Background

RAB24 is a small GTPase of the Rab subfamily of Ras-related proteins that regulate intracellular protein trafficking (Olkkonen et al., 1993 [PubMed 8126105]).

Recommended Dilutions

WB 1:500 - 1:2000

IP 0.5µg-4µg antibody for
200µg-400µg extracts of
whole cells

ELISA Recommended starting
concentration is 1 µg/mL.
Please optimize the
concentration based on
your specific assay
requirements.

Immunogen Information

Gene ID

53917

Swiss Prot

Q969Q5

Immunogen

Recombinant protein (or fragment). This information is considered to be commercially sensitive.

Synonyms

RAB24

Contact

 | 400-999-6126

 | cn.market@abclonal.com.cn

 | www.abclonal.com.cn

Product Information

Source

Rabbit

Isotype

IgG

Purification

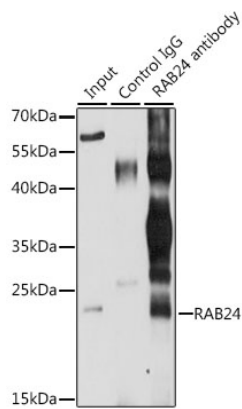
Affinity purification

Storage

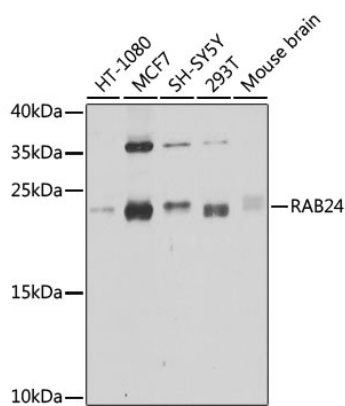
Store at -20°C. Avoid freeze / thaw cycles.

Buffer: PBS with 0.02% sodium azide, 50% glycerol, pH7.3.

Validation Data



Immunoprecipitation analysis of 200 µg extracts of MCF-7 cells, using 3 µg RAB24 antibody (A8394). Western blot was performed from the immunoprecipitate using RAB24 antibody (A8394) at a dilution of 1:1000.



Western blot analysis of various lysates using RAB24 Rabbit pAb (A8394) at 1:1000 dilution. Secondary antibody: HRP-conjugated Goat anti-Rabbit IgG (H+L) (AS014) at 1:10000 dilution. Lysates/proteins: 25µg per lane. Blocking buffer: 3% nonfat dry milk in TBST. Detection: ECL Enhanced Kit (RM00021). Exposure time: 15s.