

# DSPP Rabbit pAb

Catalog No.: A8413 **6 Publications**

## Basic Information

### Observed MW

110kDa

### Calculated MW

131kDa

### Category

Primary antibody

### Applications

WB, ELISA

### Cross-Reactivity

Human, Mouse, Rat

## Background

This gene encodes a member of the small integrin-binding ligand N-linked glycoprotein (SIBLING) family of proteins. The encoded preproprotein is secreted by odontoblasts and proteolytically processed to generate two principal proteins of the dentin extracellular matrix of the tooth, dentin sialoprotein and dentin phosphoprotein. These two protein products may play distinct but related roles in dentin mineralization. Mutations in this gene are associated with dentinogenesis imperfecta and dentin dysplasia. This gene is present in a gene cluster on chromosome 4. Allelic differences due to repeat polymorphisms have been found for this gene.

## Recommended Dilutions

**WB** 1:500 - 1:5000

**ELISA** Recommended starting concentration is 1 µg/mL. Please optimize the concentration based on your specific assay requirements.

## Immunogen Information

### Gene ID

1834

### Swiss Prot

Q9NZW4

### Immunogen

Recombinant protein (or fragment). This information is considered to be commercially sensitive.

### Synonyms

DPP; DSP; DGI1; DMP3; DFNA39; DSPP

## Contact

☎ | 400-999-6126

✉ | [cn.market@abclonal.com.cn](mailto:cn.market@abclonal.com.cn)

🌐 | [www.abclonal.com.cn](http://www.abclonal.com.cn)

## Product Information

### Source

Rabbit

### Isotype

IgG

### Purification

Affinity purification

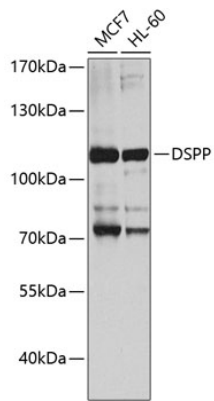
### Storage

Store at -20°C. Avoid freeze / thaw cycles.

Buffer: PBS containing 50% glycerol, preserved with proclin300 or sodium azide (as specified on the Certificate of Analysis), pH 7.3.

## Validation Data

---



Western blot analysis of various lysates using DSPP Rabbit pAb (A8413) at 1:1000 dilution.  
Secondary antibody: HRP-conjugated Goat anti-Rabbit IgG (H+L) (AS014) at 1:10000 dilution.  
Lysates/proteins: 25µg per lane.  
Blocking buffer: 3% nonfat dry milk in TBST.  
Detection: ECL Basic Kit (RM00020).  
Exposure time: 30s.