

ESRRB Rabbit pAb

Catalog No.: A8416

1 Publications

Basic Information

Observed MW

56kDa

Calculated MW

48kDa

Category

Primary antibody

Applications

ELISA, WB

Cross-Reactivity

Human, Mouse

Background

This gene encodes a protein with similarity to the estrogen receptor. Its function is unknown; however, a similar protein in mouse plays an essential role in placental development.

Recommended Dilutions

WB 1:500 - 1:1000

Immunogen Information

Gene ID

2103

Swiss Prot

O95718

Immunogen

Recombinant fusion protein containing a sequence corresponding to amino acids 434-508 of human ESRRB (NP_004443.3).

Synonyms

ERR2; ERRb; ESRL2; NR3B2; DFNB35; ERRbeta2; ERR beta-2; ESRRB

Contact

☎ | 400-999-6126

✉ | cn.market@abclonal.com.cn

🌐 | www.abclonal.com.cn

Product Information

Source

Rabbit

Isotype

IgG

Purification

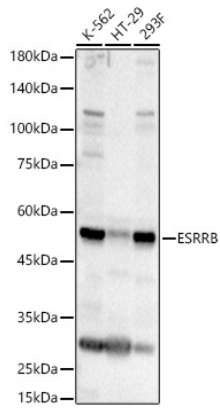
Affinity purification

Storage

Store at -20°C. Avoid freeze / thaw cycles.

Buffer: PBS with 0.02% sodium azide, 50% glycerol, pH 7.3.

Validation Data



Western blot analysis of various lysates, using ESRRB Rabbit pAb (A8416) at 1:600 dilution.
Secondary antibody: HRP Goat Anti-Rabbit IgG (H+L) (AS014) at 1:10000 dilution.
Lysates/proteins: 25µg per lane.
Blocking buffer: 3% nonfat dry milk in TBST.
Detection: ECL Basic Kit (RM00020).
Exposure time: 1s.