

GHRHR Rabbit pAb

Catalog No.: A8421

Basic Information

Observed MW

45kDa

Calculated MW

47kDa

Category

Primary antibody

Applications

ELISA, WB, IF/ICC

Cross-Reactivity

Human, Mouse, Rat

Background

This gene encodes a receptor for growth hormone-releasing hormone. Binding of this hormone to the receptor leads to synthesis and release of growth hormone. Mutations in this gene have been associated with isolated growth hormone deficiency (IGHD), also known as Dwarfism of Sindh, a disorder characterized by short stature.

Recommended Dilutions

WB 1:100 - 1:500

IF/ICC 1:50 - 1:200

Immunogen Information

Gene ID

2692

Swiss Prot

Q02643

Immunogen

Recombinant fusion protein containing a sequence corresponding to amino acids 1-130 of human GHRHR (NP_000814.2).

Synonyms

GRFR; GHRFR; IGHD4; IGHD1B; GHRHR

Contact

☎ | 400-999-6126

✉ | cn.market@abclonal.com.cn

🌐 | www.abclonal.com.cn

Product Information

Source

Rabbit

Isotype

IgG

Purification

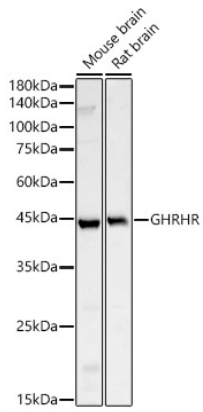
Affinity purification

Storage

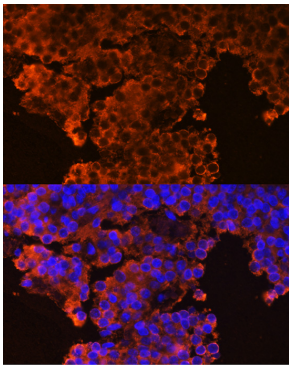
Store at -20°C. Avoid freeze / thaw cycles.

Buffer: PBS with 0.02% sodium azide, 50% glycerol, pH 7.3.

Validation Data



Western blot analysis of various lysates, using GHRHR Rabbit pAb (A8421) at 1:400 dilution.
Secondary antibody: HRP Goat Anti-Rabbit IgG (H+L) (AS014) at 1:10000 dilution.
Lysates/proteins: 25µg per lane.
Blocking buffer: 3% nonfat dry milk in TBST.
Detection: ECL Basic Kit (RM00020).
Exposure time: 180s.



Immunofluorescence analysis of rat pituitary gland cells using GHRHR Rabbit pAb (A8421) at dilution of 1:100 (40x lens). Blue: DAPI for nuclear staining.