

MARK1 Rabbit pAb

Catalog No.: A8435 **1 Publications**

Basic Information

Observed MW

95kDa

Calculated MW

89kDa

Category

Primary antibody

Applications

ELISA, WB, IHC-P

Cross-Reactivity

Human, Mouse

Background

Enables several functions, including ATP binding activity; phospholipid binding activity; and protein kinase activity. Involved in intracellular signal transduction and protein phosphorylation. Located in cytoplasm; dendrite; and plasma membrane.

Recommended Dilutions

WB	1:500 - 1:2000
IHC-P	1:50 - 1:200

Immunogen Information

Gene ID

4139

Swiss Prot

Q9POL2

Immunogen

Recombinant fusion protein containing a sequence corresponding to amino acids 560-700 of human MARK1 (NP_061120.3).

Synonyms

MARK; Par1c; Par-1c; MARK1

Contact

 | 400-999-6126

 | cn.market@abclonal.com.cn

 | www.abclonal.com.cn

Product Information

Source

Rabbit

Isotype

IgG

Purification

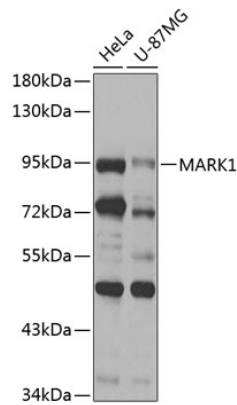
Affinity purification

Storage

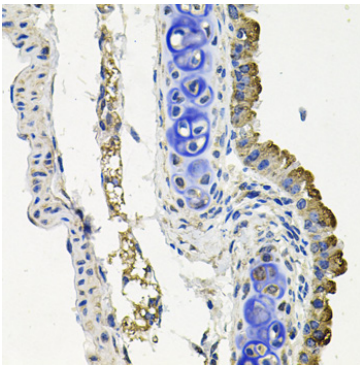
Store at -20°C. Avoid freeze / thaw cycles.

Buffer: PBS with 0.02% sodium azide, 50% glycerol, pH7.3.

Validation Data



Western blot analysis of various lysates using MARK1 Rabbit pAb (A8435) at 1:1000 dilution.
Secondary antibody: HRP Goat Anti-Rabbit IgG (H+L) (AS014) at 1:10000 dilution.
Lysates/proteins: 25 μ g per lane.
Blocking buffer: 3% nonfat dry milk in TBST.
Detection: ECL Basic Kit (RM00020).
Exposure time: 30s.



Immunohistochemistry analysis of paraffin-embedded Mouse lung using MARK1 Rabbit pAb (A8435) at dilution of 1:100 (40x lens). Perform microwave antigen retrieval with 10 mM PBS buffer pH 7.2 before commencing with IHC staining protocol.