

Neurofilament H Rabbit pAb

Catalog No.: A8442

Basic Information

Observed MW

150kDa/220kDa

Calculated MW

112kDa

Category

Primary antibody

Applications

ELISA, WB, IF/ICC, IP

Cross-Reactivity

Human, Mouse, Rat

Background

Neurofilaments are type IV intermediate filament heteropolymers composed of light, medium, and heavy chains. Neurofilaments comprise the axoskeleton and functionally maintain neuronal caliber. They may also play a role in intracellular transport to axons and dendrites. This gene encodes the heavy neurofilament protein. This protein is commonly used as a biomarker of neuronal damage and susceptibility to amyotrophic lateral sclerosis (ALS) has been associated with mutations in this gene.

Recommended Dilutions

WB 1:500 - 1:1000

IF/ICC 1:50 - 1:200

IP 0.5µg-4µg antibody for
400µg-600µg extracts of
whole cells

Immunogen Information

Gene ID

4744

Swiss Prot

P12036

Immunogen

Recombinant fusion protein containing a sequence corresponding to amino acids 873-1020 of human Neurofilament H (NP_066554.2).

Synonyms

NFH; CMT2CC; Neurofilament H

Contact

☎ | 400-999-6126

✉ | cn.market@abclonal.com.cn

🌐 | www.abclonal.com.cn

Product Information

Source

Rabbit

Isotype

IgG

Purification

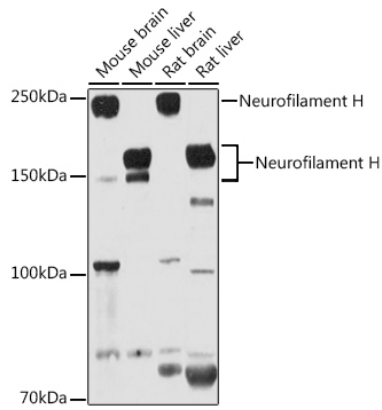
Affinity purification

Storage

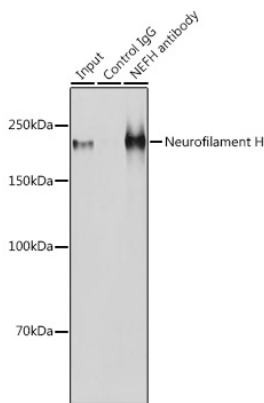
Store at -20°C. Avoid freeze / thaw cycles.

Buffer: PBS with 0.01% thimerosal, 50% glycerol, pH7.3.

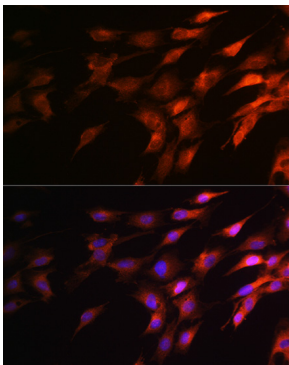
Validation Data



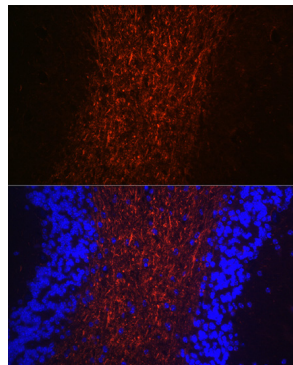
Western blot analysis of various lysates using Neurofilament H Rabbit pAb (A8442) at 1:1000 dilution. Secondary antibody: HRP Goat Anti-Rabbit IgG (H+L) (AS014) at 1:10000 dilution. Lysates/proteins: 25µg per lane. Blocking buffer: 3% nonfat dry milk in TBST. Detection: ECL Basic Kit (RM00020). Exposure time: 30s.



Immunoprecipitation analysis of 600 µg extracts of Mouse brain cells using 3 µg Neurofilament H antibody (A8442). Western blot was performed from the immunoprecipitate using Neurofilament H antibody (A8442) at a dilution of 1:1000.



Immunofluorescence analysis of C6 cells using Neurofilament H Rabbit pAb (A8442) at dilution of 1:100 (40x lens). Secondary antibody: Cy3 Goat Anti-Rabbit IgG (H+L) (AS007) at 1:500 dilution. Blue: DAPI for nuclear staining.



Immunofluorescence analysis of paraffin-embedded mouse brain using Neurofilament H Rabbit pAb (A8442) at dilution of 1:100 (40x lens). Secondary antibody: Cy3 Goat Anti-Rabbit IgG (H+L) (AS007) at 1:500 dilution. Blue: DAPI for nuclear staining.