

SLCO1A2 Rabbit pAb

Catalog No.: A8452 **2 Publications**

Basic Information

Observed MW

74kDa

Calculated MW

74kDa

Category

Primary antibody

Applications

WB,ELISA

Cross-Reactivity

Rat

Background

This gene encodes a sodium-independent transporter which mediates cellular uptake of organic ions in the liver. Its substrates include bile acids, bromosulphophthalein, and some steroidal compounds. The protein is a member of the SLC21A family of solute carriers. Alternative splicing of this gene results in multiple transcript variants.

Recommended Dilutions

WB 1:1000 - 1:5000

ELISA Recommended starting concentration is 1 µg/mL. Please optimize the concentration based on your specific assay requirements.

Immunogen Information

Gene ID

6579

Swiss Prot

P46721

Immunogen

A synthetic peptide corresponding to a sequence within amino acids 400-500 of human SLCO1A2 (NP_066580.1).

Synonyms

OATP; OATP-A; OATP1A2; SLC21A3; SLCO1A2

Contact

☎ | 400-999-6126

✉ | cn.market@abclonal.com.cn

🌐 | www.abclonal.com.cn

Product Information

Source

Rabbit

Isotype

IgG

Purification

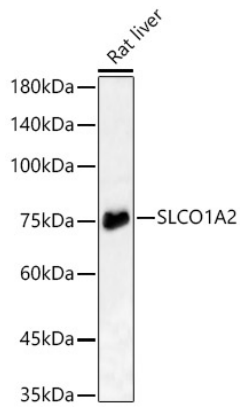
Affinity purification

Storage

Store at -20°C. Avoid freeze / thaw cycles.

Buffer: PBS with 0.02% sodium azide,50% glycerol,pH7.3.

Validation Data



Western blot analysis of lysates from Rat liver, using SLCO1A2 Rabbit pAb (A8452) at 1:3000 dilution.
Secondary antibody: HRP-conjugated Goat anti-Rabbit IgG (H+L) (AS014) at 1:10000 dilution.
Lysates/proteins: 25µg per lane.
Blocking buffer: 3% nonfat dry milk in TBST.
Detection: ECL Basic Kit (RM00020).
Exposure time: 180s.