

TAF15 Rabbit pAb

Catalog No.: A8465

Basic Information

Observed MW

80kDa

Calculated MW

62kDa

Category

Primary antibody

Applications

ELISA, WB, IHC-P, IF/ICC, IP

Cross-Reactivity

Human

Background

This gene encodes a member of the TET family of RNA-binding proteins. The encoded protein plays a role in RNA polymerase II gene transcription as a component of a distinct subset of multi-subunit transcription initiation factor TFIID complexes. Translocations involving this gene play a role in acute leukemia and extraskeletal myxoid chondrosarcoma, and mutations in this gene may play a role in amyotrophic lateral sclerosis. Alternatively spliced transcript variants encoding multiple isoforms have been observed for this gene.

Recommended Dilutions

WB	1:500 - 1:2000
IHC-P	1:50 - 1:200
IF/ICC	1:50 - 1:200
IP	0.5µg-4µg antibody for 200µg-400µg extracts of whole cells

Contact

	400-999-6126
	cn.market@abclonal.com.cn
	www.abclonal.com.cn

Immunogen Information

Gene ID

8148

Swiss Prot

Q92804

Immunogen

Recombinant fusion protein containing a sequence corresponding to amino acids 1-280 of human TAF15 (NP_631961.1).

Synonyms

Npl3; RBP56; TAF2N; TAFII68; TAF15

Product Information

Source

Rabbit

Isotype

IgG

Purification

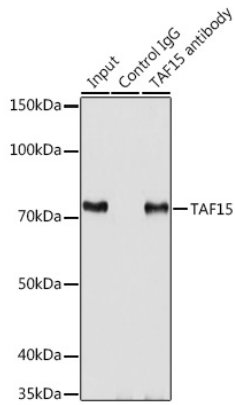
Affinity purification

Storage

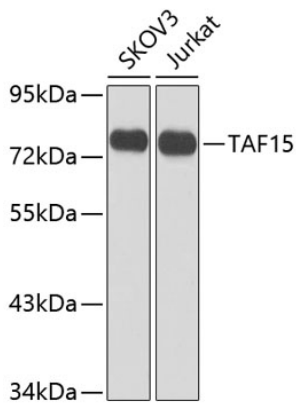
Store at -20°C. Avoid freeze / thaw cycles.

Buffer: PBS with 0.02% sodium azide, 50% glycerol, pH7.3.

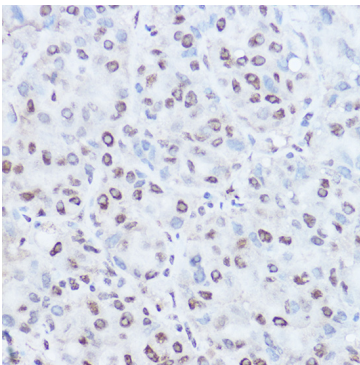
Validation Data



Immunoprecipitation analysis of 200 µg extracts of SKOV3 cells using 3 µg TAF15 antibody (A8465). Western blot was performed from the immunoprecipitate using TAF15 antibody (A8465) at a dilution of 1:1000.



Western blot analysis of various lysates using TAF15 Rabbit pAb (A8465) at 1:1000 dilution. Secondary antibody: HRP Goat Anti-Rabbit IgG (H+L) (AS014) at 1:10000 dilution. Lysates/proteins: 25µg per lane. Blocking buffer: 3% nonfat dry milk in TBST. Detection: ECL Enhanced Kit (RM00021). Exposure time: 5s.



Immunohistochemistry analysis of paraffin-embedded Human liver cancer using TAF15 Rabbit pAb (A8465) at dilution of 1:100 (40x lens). Perform high pressure antigen retrieval with 10 mM citrate buffer pH 6.0 before commencing with IHC staining protocol.