

PTPRU Rabbit pAb

Catalog No.: A8475

Basic Information

Observed MW

100kDa

Calculated MW

162kDa

Category

Primary antibody

Applications

ELISA,WB

Cross-Reactivity

Mouse, Rat

Background

The protein encoded by this gene is a member of the protein tyrosine phosphatase (PTP) family. PTPs are known to be signaling molecules that regulate a variety of cellular processes including cell growth, differentiation, mitotic cycle, and oncogenic transformation. This PTP possesses an extracellular region, a single transmembrane region, and two tandem intracellular catalytic domains, and thus represents a receptor-type PTP. The extracellular region contains a meprin-A5 antigen-PTP (MAM) domain, Ig-like and fibronectin type III-like repeats. This PTP was thought to play roles in cell-cell recognition and adhesion. Studies of the similar gene in mice suggested the role of this PTP in early neural development. The expression of this gene was reported to be regulated by phorbol myristate acetate (PMA) or calcium ionophore in Jurkat T lymphoma cells. Alternatively spliced transcript variants have been reported.

Recommended Dilutions

WB 1:500 - 1:1000

Immunogen Information

Gene ID

10076

Swiss Prot

Q92729

Immunogen

A synthetic peptide corresponding to a sequence within amino acids 1-100 of human PTPRU (NP_005695.3).

Synonyms

FMI; PTP; PCP-2; PTP-J; PTPRO; PTPU2; PTP-PI; PTP-RO; PTPPSI; hPTP-J; R-PTP-U; R-PTP-PSI; PTPRU

Contact

 | 400-999-6126 | cn.market@abclonal.com.cn | www.abclonal.com.cn

Product Information

Source

Rabbit

Isotype

IgG

Purification

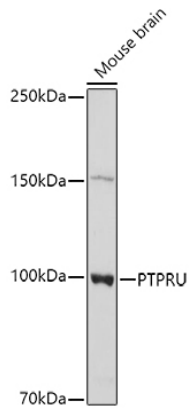
Affinity purification

Storage

Store at -20°C. Avoid freeze / thaw cycles.

Buffer: PBS with 0.01% thimerosal, 50% glycerol, pH7.3.

Validation Data



Western blot analysis of extracts of Mouse brain cells, using PTPRU antibody (A8475) at 1:1000 dilution.
Secondary antibody: HRP Goat Anti-Rabbit IgG (H+L) (AS014) at 1:10000 dilution.
Lysates/proteins: 25 μ g per lane.
Blocking buffer: 3% nonfat dry milk in TBST.
Detection: ECL Basic Kit (RM00020).
Exposure time: 180s.