

SYNPO Rabbit pAb

Catalog No.: A8484

1 Publications

Basic Information

Observed MW

125kDa

Calculated MW

99kDa

Category

Primary antibody

Applications

ELISA, WB

Cross-Reactivity

Human, Mouse, Rat

Background

Synaptopodin is an actin-associated protein that may play a role in actin-based cell shape and motility. The name synaptopodin derives from the protein's associations with postsynaptic densities and dendritic spines and with renal podocytes (Mundel et al., 1997 [PubMed 9314539]).

Recommended Dilutions

WB 1:500 - 1:2000

Immunogen Information

Gene ID

11346

Swiss Prot

Q8N3V7

Immunogen

Recombinant fusion protein containing a sequence corresponding to amino acids 1-260 of human SYNPO (NP_001159680.1).

Synonyms

SYNPO

Contact

☎ | 400-999-6126

✉ | cn.market@abclonal.com.cn

🌐 | www.abclonal.com.cn

Product Information

Source

Rabbit

Isotype

IgG

Purification

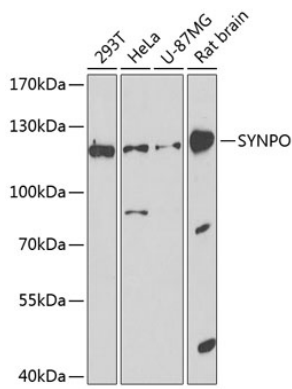
Affinity purification

Storage

Store at -20°C. Avoid freeze / thaw cycles.

Buffer: PBS with 0.02% sodium azide, 50% glycerol, pH7.3.

Validation Data



Western blot analysis of extracts of various cell lines, using SYNPO antibody (A8484) at 1:1000 dilution.
Secondary antibody: HRP Goat Anti-Rabbit IgG (H+L) (AS014) at 1:10000 dilution.
Lysates/proteins: 25µg per lane.
Blocking buffer: 3% nonfat dry milk in TBST.
Detection: ECL Basic Kit (RM00020).
Exposure time: 90s.