

CEP83 Rabbit pAb

Catalog No.: A8491

Basic Information

Observed MW

82kDa

Calculated MW

83kDa

Category

Primary antibody

Applications

ELISA, WB

Cross-Reactivity

Human, Mouse

Background

The protein encoded by this gene is a centriolar protein involved in primary cilium assembly. Defects in this gene have been associated with infantile nephronophthisis and intellectual disability.

Recommended Dilutions

WB 1:500 - 1:2000

Immunogen Information

Gene ID

51134

Swiss Prot

Q9Y592

Immunogen

Recombinant fusion protein containing a sequence corresponding to amino acids 34-260 of human CEP83 (NP_057206.2).

Synonyms

CCDC41; NPHP18; NY-REN-58; CEP83

Contact

☎ | 400-999-6126

✉ | cn.market@abclonal.com.cn

🌐 | www.abclonal.com.cn

Product Information

Source

Rabbit

Isotype

IgG

Purification

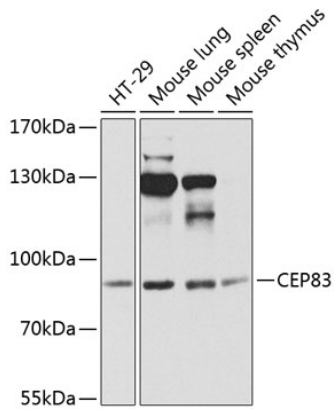
Affinity purification

Storage

Store at -20°C. Avoid freeze / thaw cycles.

Buffer: PBS with 0.02% sodium azide, 50% glycerol, pH 7.3.

Validation Data



Western blot analysis of extracts of various cell lines, using CEP83 antibody (A8491) at 1:1000 dilution.
Secondary antibody: HRP Goat Anti-Rabbit IgG (H+L) (AS014) at 1:10000 dilution.
Lysates/proteins: 25µg per lane.
Blocking buffer: 3% nonfat dry milk in TBST.
Detection: ECL Basic Kit (RM00020).
Exposure time: 90s.