

# SMEK1 Rabbit pAb

Catalog No.: A8500

## Basic Information

### Observed MW

110kDa

### Calculated MW

95kDa

### Category

Primary antibody

### Applications

ELISA, WB, IHC-P

### Cross-Reactivity

Human, Mouse, Rat

## Background

Predicted to act upstream of or within positive regulation of gluconeogenesis and protein dephosphorylation. Located in cytosol and nuclear speck.

## Recommended Dilutions

WB	1:500 - 1:2000
IHC-P	1:50 - 1:200

## Immunogen Information

### Gene ID

55671

### Swiss Prot

Q6IN85

### Immunogen

Recombinant fusion protein containing a sequence corresponding to amino acids 395-594 of human SMEK1 (NP\_001271210.1).

### Synonyms

smk1; FLFL1; PP4R3; SMEK1; smk-1; PP4R3A; MSTP033; KIAA2010

## Contact

☎ | 400-999-6126

✉ | [cn.market@abclonal.com.cn](mailto:cn.market@abclonal.com.cn)

🌐 | [www.abclonal.com.cn](http://www.abclonal.com.cn)

## Product Information

### Source

Rabbit

### Isotype

IgG

### Purification

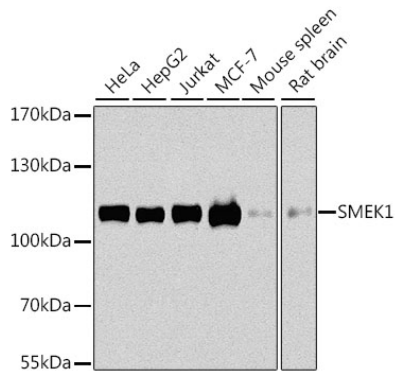
Affinity purification

### Storage

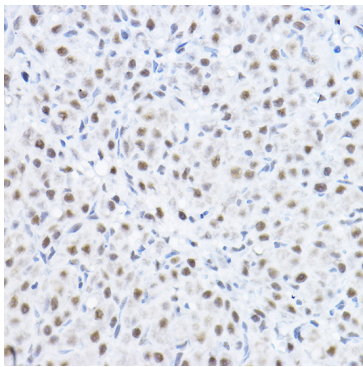
Store at -20°C. Avoid freeze / thaw cycles.

Buffer: PBS with 0.02% sodium azide, 50% glycerol, pH 7.3.

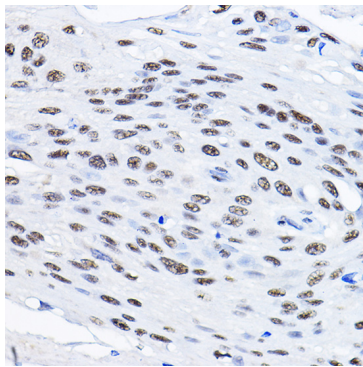
## Validation Data



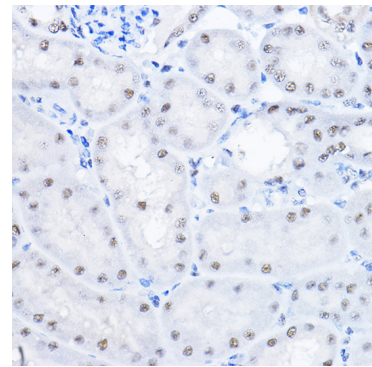
Western blot analysis of various lysates using SMEK1 Rabbit pAb (A8500) at 1:1000 dilution. Secondary antibody: HRP Goat Anti-Rabbit IgG (H+L) (AS014) at 1:10000 dilution. Lysates/proteins: 25µg per lane. Blocking buffer: 3% nonfat dry milk in TBST. Detection: ECL Basic Kit (RM00020). Exposure time: 10s.



Immunohistochemistry analysis of paraffin-embedded Rat ovary using SMEK1 Rabbit pAb (A8500) at dilution of 1:100 (40x lens). Perform high pressure antigen retrieval with 10 mM citrate buffer pH 6.0 before commencing with IHC staining protocol.



Immunohistochemistry analysis of paraffin-embedded Human esophageal cancer using SMEK1 Rabbit pAb (A8500) at dilution of 1:100 (40x lens). Perform high pressure antigen retrieval with 10 mM citrate buffer pH 6.0 before commencing with IHC staining protocol.



Immunohistochemistry analysis of paraffin-embedded Mouse kidney using SMEK1 Rabbit pAb (A8500) at dilution of 1:100 (40x lens). Perform high pressure antigen retrieval with 10 mM citrate buffer pH 6.0 before commencing with IHC staining protocol.