

VEPH1 Rabbit pAb

Catalog No.: A8510 **1 Publications**

Basic Information

Observed MW

105kDa

Calculated MW

95kDa

Category

Primary antibody

Applications

ELISA, WB

Cross-Reactivity

Human, Mouse

Background

Predicted to enable phosphatidylinositol-5-phosphate binding activity. Involved in negative regulation of SMAD protein signal transduction and negative regulation of transforming growth factor beta receptor signaling pathway. Predicted to be active in plasma membrane.

Recommended Dilutions

WB 1:500 - 1:2000

Immunogen Information

Gene ID

79674

Swiss Prot

Q14D04

Immunogen

Recombinant fusion protein containing a sequence corresponding to amino acids 448-547 of human VEPH1 (NP_078897.2).

Synonyms

MELT; VEPH; VEPH1

Contact

 | 400-999-6126

 | cn.market@abclonal.com.cn

 | www.abclonal.com.cn

Product Information

Source

Rabbit

Isotype

IgG

Purification

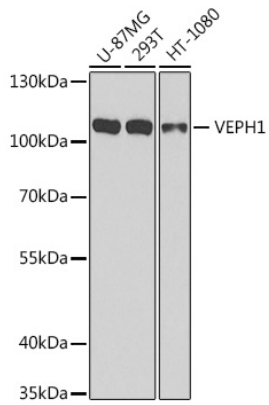
Affinity purification

Storage

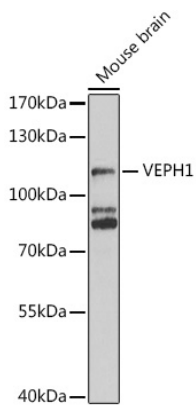
Store at -20°C. Avoid freeze / thaw cycles.

Buffer: PBS with 0.02% sodium azide, 50% glycerol, pH 7.3.

Validation Data



Western blot analysis of extracts of various cell lines, using VEPH1 antibody (A8510) at 1:1000 dilution.
Secondary antibody: HRP Goat Anti-Rabbit IgG (H+L) (AS014) at 1:10000 dilution.
Lysates/proteins: 25µg per lane.
Blocking buffer: 3% nonfat dry milk in TBST.
Detection: ECL Basic Kit (RM00020).
Exposure time: 30s.



Western blot analysis of extracts of Mouse brain, using VEPH1 antibody (A8510) at 1:1000 dilution.
Secondary antibody: HRP Goat Anti-Rabbit IgG (H+L) (AS014) at 1:10000 dilution.
Lysates/proteins: 25µg per lane.
Blocking buffer: 3% nonfat dry milk in TBST.
Detection: ECL Enhanced Kit (RM00021).
Exposure time: 5s.