

ZNF408 Rabbit pAb

Catalog No.: A8512

Basic Information

Observed MW

78kDa

Calculated MW

78kDa

Category

Primary antibody

Applications

ELISA, WB

Cross-Reactivity

Human, Mouse, Rat

Background

The protein encoded by this gene contains ten tandem zinc fingers and an N-terminal SET domain, so it is likely a DNA binding protein that interacts with other proteins. In adults, the encoded protein is expressed most highly in retina. Consequently, defects in this gene have been associated with familial exudative vitreoretinopathy (FEVR) and retinitis pigmentosa (RP).

Recommended Dilutions

WB 1:500 - 1:2000

Immunogen Information

Gene ID

79797

Swiss Prot

Q9H9D4

Immunogen

Recombinant fusion protein containing a sequence corresponding to amino acids 471-720 of human ZNF408 (NP_079017.1).

Synonyms

EVR6; RP72; ZNF408

Contact

☎ | 400-999-6126

✉ | cn.market@abclonal.com.cn

🌐 | www.abclonal.com.cn

Product Information

Source

Rabbit

Isotype

IgG

Purification

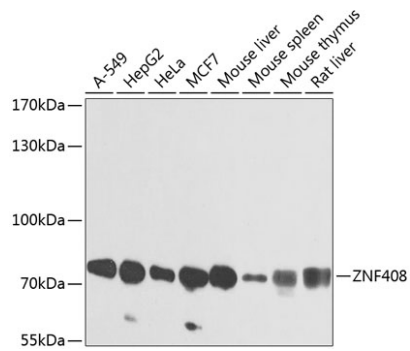
Affinity purification

Storage

Store at -20°C. Avoid freeze / thaw cycles.

Buffer: PBS with 0.02% sodium azide, 50% glycerol, pH7.3.

Validation Data



Western blot analysis of extracts of various cell lines, using ZNF408 antibody (A8512) at 1:1000 dilution.
Secondary antibody: HRP Goat Anti-Rabbit IgG (H+L) (AS014) at 1:10000 dilution.
Lysates/proteins: 25µg per lane.
Blocking buffer: 3% nonfat dry milk in TBST.
Detection: ECL Enhanced Kit (RM00021).
Exposure time: 1s.