

EHMT1 Rabbit pAb

Catalog No.: A8513

1 Publications

Basic Information

Observed MW

180kDa

Calculated MW

141kDa

Category

Primary antibody

Applications

WB, ELISA

Cross-Reactivity

Human, Mouse, Rat

Background

The protein encoded by this gene is a histone methyltransferase that methylates the lysine-9 position of histone H3. This action marks the genomic region packaged with these methylated histones for transcriptional repression. This protein may be involved in the silencing of MYC- and E2F-responsive genes and therefore could play a role in the G0/G1 cell cycle transition. Defects in this gene are a cause of chromosome 9q subtelomeric deletion syndrome (9q-syndrome, also known as Kleefstra syndrome). Alternative splicing results in multiple transcript variants.

Recommended Dilutions

WB 1:500 - 1:2000**ELISA** Recommended starting concentration is 1 µg/mL. Please optimize the concentration based on your specific assay requirements.

Immunogen Information

Gene ID

79813

Swiss Prot

Q9H9B1

Immunogen

Recombinant protein (or fragment). This information is considered to be commercially sensitive.

Synonyms

GLP; GLP1; KMT1D; KLEFS1; FP13812; EHMT1-IT1; EUHMTASE1; Eu-HMTase1; EHMT1

Contact

 | 400-999-6126 | cn.market@abclonal.com.cn | www.abclonal.com.cn

Product Information

Source

Rabbit

Isotype

IgG

Purification

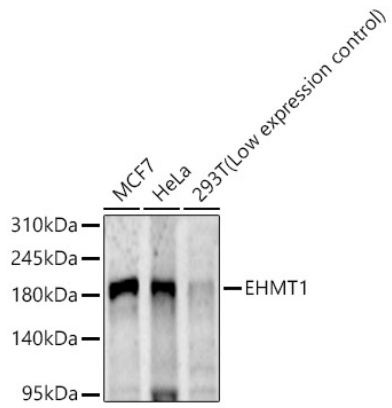
Affinity purification

Storage

Store at -20°C. Avoid freeze / thaw cycles.

Buffer: PBS containing 50% glycerol, preserved with proclin300 or sodium azide (as specified on the Certificate of Analysis), pH 7.3.

Validation Data



Western blot analysis of various lysates using EHM1 Rabbit pAb (A8513) at 1:1000 dilution.
Secondary antibody: HRP-conjugated Goat anti-Rabbit IgG (H+L) (AS014) at 1:10000 dilution.
Lysates / proteins: 25 µg per lane.
Blocking buffer: 3 % nonfat dry milk in TBST.
Detection: ECL Basic Kit (RM00020).
Exposure time: 180s.