

CALCRL Rabbit pAb

Catalog No.: A8533

3 Publications

Basic Information

Observed MW

43kDa

Calculated MW

53kDa

Category

Primary antibody

Applications

WB, ELISA

Cross-Reactivity

Human, Mouse, Rat

Background

Enables adrenomedullin binding activity; adrenomedullin receptor activity; and calcitonin gene-related peptide receptor activity. Involved in several processes, including G protein-coupled receptor signaling pathway; cellular response to sucrose stimulus; and receptor internalization. Located in endoplasmic reticulum; endosome; and lysosome. Part of CGRP receptor complex and adrenomedullin receptor complex. Colocalizes with plasma membrane. Implicated in hereditary lymphedema.

Recommended Dilutions

WB 1:500 - 1:2000

ELISA Recommended starting concentration is 1 µg/mL. Please optimize the concentration based on your specific assay requirements.

Immunogen Information

Gene ID

10203

Swiss Prot

Q16602

Immunogen

Synthetic peptide. This information is considered to be commercially sensitive.

Synonyms

CRLR; CGRPR; LMPHM8; CALCRL

Contact

☎ | 400-999-6126

✉ | cn.market@abclonal.com.cn

🌐 | www.abclonal.com.cn

Product Information

Source

Rabbit

Isotype

IgG

Purification

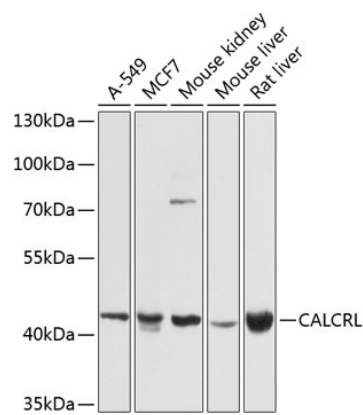
Affinity purification

Storage

Store at -20°C. Avoid freeze / thaw cycles.

Buffer: PBS with 0.02% sodium azide, 50% glycerol, pH 7.3.

Validation Data



Western blot analysis of various lysates using CALCRL Rabbit pAb (A8533) at 1:1000 dilution.
Secondary antibody: HRP-conjugated Goat anti-Rabbit IgG (H+L) (AS014) at 1:10000 dilution.
Lysates/proteins: 25µg per lane.
Blocking buffer: 3% nonfat dry milk in TBST.
Detection: ECL Basic Kit (RM00020).
Exposure time: 15s.