

AMD1 Rabbit pAb

Catalog No.: A8537

Basic Information

Observed MW

32kDa/42kDa

Calculated MW

38kDa

Category

Primary antibody

Applications

ELISA, WB

Cross-Reactivity

Human, Mouse, Rat

Background

This gene encodes an important intermediate enzyme in polyamine biosynthesis. The polyamines spermine, spermidine, and putrescine are low-molecular-weight aliphatic amines essential for cellular proliferation and tumor promotion. Multiple alternatively spliced transcript variants have been identified. Pseudogenes of this gene are found on chromosomes 5, 6, 10, X and Y.

Recommended Dilutions

WB 1:500 - 1:1000

Immunogen Information

Gene ID

262

Swiss Prot

P17707

Immunogen

Recombinant fusion protein containing a sequence corresponding to amino acids 75-334 of human AMD1 (NP_001625.2).

Synonyms

AMD; SAMDC; ADOMETDC; AMD1

Contact

 | 400-999-6126

 | cn.market@abclonal.com.cn

 | www.abclonal.com.cn

Product Information

Source

Rabbit

Isotype

IgG

Purification

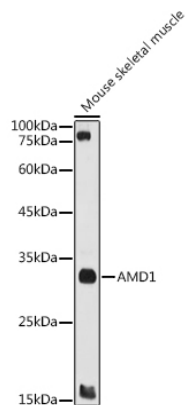
Affinity purification

Storage

Store at -20°C. Avoid freeze / thaw cycles.

Buffer: PBS with 0.02% sodium azide, 50% glycerol, pH7.3.

Validation Data



Western blot analysis of extracts of Mouse skeletal muscle, using AMD1 antibody (A8537) at 1:1000 dilution.

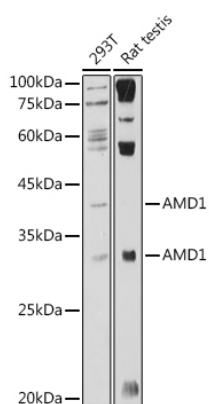
Secondary antibody: HRP Goat Anti-Rabbit IgG (H+L) (AS014) at 1:10000 dilution.

Lysates/proteins: 25µg per lane.

Blocking buffer: 3% nonfat dry milk in TBST.

Detection: ECL Basic Kit (RM00020).

Exposure time: 60s.



Western blot analysis of extracts of various cell lines, using AMD1 antibody (A8537) at 1:1000 dilution.

Secondary antibody: HRP Goat Anti-Rabbit IgG (H+L) (AS014) at 1:10000 dilution.

Lysates/proteins: 25µg per lane.

Blocking buffer: 3% nonfat dry milk in TBST.

Detection: ECL Basic Kit (RM00020).

Exposure time: 180s.